

IT Methodology Webinar



A Context for IT Methodology

PROJECTinsight®

Project & Portfolio Management Software

Initiate Project Intelligence®

Things to Know...



- ▶ All participants will be on mute
- ▶ Questions are welcome
- ▶ Ask questions in the question box
- ▶ We **DO NOT** send out PDU certificates
- ▶ May be valid for PDU credit (**self-report session**)

- For more information check out article on Webinars and PDUs

<http://www.projectinsight.net/support/kb/webinars-and-pdus>

Moderator



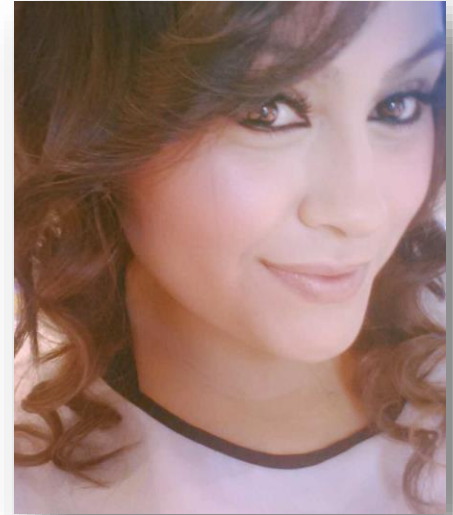
Denise Rodriguez

Project Insight

Marketing

Denise.Rodriguez@projectinsight.com

www.projectinsight.net





Schedule a customized demo today!

- +1 (949) 476-6499 x3
- info@projectinsight.net
- Request info: www.projectinsight.net

Presenter



Cameron Watson

President, QAlassist

cwatson@qaiassist.com

www.qaiassist.com



Who's on the call?



- ▶ I am a Project Manager
- ▶ I am a Business or Operational Manager
- ▶ I am a software developer or software tester
- ▶ I am a member of an organizational PMO, governance or quality assurance function
- ▶ I want a better understanding of IT Methodology

Who is QAlassist?



- Established 2007 – Ottawa, Canada
- Nurturing organizational efficiency through IT Methodology knowledge & expertise
- Support and promote a community with evolving IT Methodology knowledge and expertise
- Maintain, optimize, promote and support the delivery of IT methodology products and lifecycles proven to increase operational performance
- Administration and oversight of QAlassist Integrated Methodology (QAlassist-IM) and formal certifications – “Foundation” & “Practitioner”
- Support practitioners and authorized affiliates in acquiring and delivering IT Methodology knowledge and expertise



IT Methodology Webinar Audience



● **Nurturing efficiency through IT Methodology knowledge & expertise across the globe**

- Over 200 countries
- Wide array of industries (manufacturing, banking, health, insurance, consulting)
- More than 50 unique webinars

● **Over 10,000 webinar registrants**

- Executives
- Operational & Delivery Managers
- Project Managers
- Business Analysts and Architects
- Application Developers & Testers
- Corporate PMO, Quality Assurance, Continuous Improvement
- Consultants



QAlassist 2017 Series - Goals



- Share IT Methodology knowledge
- Develop IT methodology understanding & expertise
- Provide additional insight into several IT (project management, software development, software testing) methodologies
- Discuss best practices on incorporating an organizational IT methodology
- Promote ongoing dialog and feedback with webinar audience (questions, email, survey)

2016 Survey Results



- IT Methodology experience and knowledge level of webinar audiences is varied
 - “Fledgling” seeking to acquire general and conceptual IT Methodology information
 - “Veterans” and seeking “nuts and bolts” and more detailed IT Methodology information
 - Most attendees are seeking more interaction and dialog (questions, polls, surveys, feedback) throughout the webinar sessions

2017 Schedule



- **The 3rd Wednesday of Every Month**

- 8:00 am Pacific - 11:00 am Eastern Time

- **IT Methodology Concepts (60 mins)**

- This series of six webinars will be presented on a bi-monthly basis. Each webinar will provide you with a context, overview, terminology and general understanding of information technology (IT) methodology.

- **IT Methodology – Tutorials (45 mins)**

- This series of five webinars will be presented on a bi-monthly basis. Each session is designed to offer a more “hands on” perspective – bridging the concepts into a practical utilization.

2017 Concept Sessions



- ▶ **The 3rd Wednesday of Month (Jan, Mar, May, Jul, Sept, Nov)**

- 8:00 am Pacific - 11:00 am Eastern Time

- ▶ **IT Methodology Concepts (60 mins)**

- A Context for IT Methodology - (Jan)
- Apply PM Fundamentals to IT - (Mar)
- Leverage the Software Development Lifecycle - (May)
- Explore the Software Testing Lifecycle - (Jul)
- Incorporate Organizational Process Governance - (Sept)
- Implementing IT Methodology - (Nov)

2017 Tutorial Sessions



- **The 3rd Wednesday of Month (Feb, Apr, Jun, Aug, Oct)**

- 8:00 am Pacific - 11:00 am Eastern Time

- **IT Methodology Tutorials (60 mins)**

- Applying IT Methodology to Project Initiation - (Feb)
- Project Planning & Design with IT in Mind - (Apr)
- Executing Projects with IT Methodologies - (Jun)
- Project Control & Verification - (Aug)
- Project Close & Delivery - (Oct)

A Context for IT Methodology

Concept I – Goals



- ▶ Establish a context for the term “IT Methodology”
- ▶ Introduce general “IT Methodology” concepts

A Context for IT Methodology

Concepts I – Agenda



- ▶ IT Methodology - general context
- ▶ IT Methodology - as a “noun” and a “verb”
- ▶ IT Methodology constructs and hierarchy - “noun” (lifecycles, phases, deliverables)
- ▶ IT Methodology - “verb” (waterfall, agile, spiral, RAD)
- ▶ IT Methodology structure & deliverable examples - “noun” (project management, software development, software testing)
- ▶ IT Methodology - organizational compatibility and benefits
- ▶ Recap

A Context for IT Methodology

Concepts I – Agenda



- ▶ **IT Methodology - general context**
- ▶ IT Methodology - as a “noun” and a “verb”
- ▶ IT Methodology constructs and hierarchy - “noun” (lifecycles, phases, deliverables)
- ▶ IT Methodology - “verb” (waterfall, agile, spiral, RAD)
- ▶ IT Methodology structure & deliverable examples - “noun” (project management, software development, software testing)
- ▶ IT Methodology - organizational compatibility and benefits
- ▶ Recap

Methodology

Terms, Terms, Terms



- ISO(900XXX)
- Agile
- CMMI
- ITIL
- Waterfall
- Rational Unified Process (RUP)
- QAlassist (IM)
- PMI
- Six-Sigma
- Prince2
- COBIT



And More Terms...



- ▶ IT Framework, IT Methodology, IT Lifecycle
 - Non Standard usage in terminology
 - Terms are used interchangeably between organizations and across the IT industry
 - Examples include
 - Project Management Methodology/Lifecycle/Framework
 - Software Development Methodology/Lifecycle (SDLC)/Framework
 - Software Testing Methodology/Lifecycle/Framework
 - Every IT organization is using an IT Methodology or IT Lifecycle or IT Framework

And More Terms...



- ▶ IT Framework, IT Methodology, IT Lifecycle
 - Non Standard usage in terminology
 - Terms are used interchangeably between organizations and across the IT industry
 - Examples include
 - Project Management Methodology/Lifecycle/Framework
 - Software Development Methodology/Lifecycle (SDLC)/Framework
 - Software Testing Methodology/Lifecycle/Framework
 - **Every IT organization is using an IT Methodology or IT Lifecycle or IT Framework**

IT Methodology Context



- Organizational Frameworks
 - ISO(900XXX), CMMI, Six-Sigma, ITIL, COBIT
- Methodologies/Lifecycles (noun)
 - Rational Unified Process (RUP), QAlassist (IM), PMI, Prince2
- Methodologies/Lifecycles (verb)
 - Waterfall, Spiral, Agile, RAD, etc

IT Methodology Context



- **Organizational Frameworks**
 - ISO(900XXX), CMMI, Six-Sigma, ITIL, COBIT
- **Methodologies/Lifecycles (noun)**
 - Rational Unified Process (RUP), QAlassist (IM), PMI, Prince2
- **Methodologies/Lifecycles (verb)**
 - Waterfall, Spiral, Agile, RAD, etc



- ▶ ISO (xxx), SEI-CMMI, Six Sigma, ITIL, COBIT
 - Broad in Scope – organizational wide
 - Process based – pre-defined criteria (interpretive)
 - Quality Management component
 - Process Metric and Process Improvement components
 - Certified Practitioners formally trained
 - Public recognition for organizational certification
 - Primarily implemented at large sized organizations



- ▶ **ISO – International Organization for Standardization**
 - Founded 1946 – ISO translates to “equal”
 - Centralized in Geneva, Switzerland – 161 countries represented
 - Largest developer and publisher of international standards
 - ie 9001 – Quality Management, 14001 – Environmental Management
 - Predefined criteria, certified auditors
 - Formal audits completed and recorded
 - Accreditation recognized
 - Reference - <http://www.iso.org/iso/home.html>



- SEI/CMMI – Software Engineering Institute (Capability Maturity Model – Integrated) – transferred to CMMI Institute (Carnegie Mellon University)
 - United States Department of Defense and Carnegie Mellon University /Software Engineering Institute (SEI) – early 1990's
 - Located in Pittsburgh, Pennsylvania – implemented worldwide
 - Software Engineering, computer security, process management and improvement
 - Formal assessments performed and recorded – accreditation recognized
 - Reference – <http://www.sei.cmu.edu/cmmi/>
 - Reference - <http://cmmiinstitute.com/>



- ▶ Six Sigma – Business Management Strategy – Quality Management
 - Business and Manufacturing Processes – Motorola mid 1980's
 - Improve the quality of process outputs by identifying and removing the causes of process defects (errors) and minimizing variability
 - Implemented worldwide – statistical methods based on defined sequence of steps and has quantified financial targets (cost reduction and/or profits)
 - Implementation via Qualified/Certified resources – Black Belt, Blue Belt
 - Dependent on internal operational processes



► ITIL – Information Technology Infrastructure Library

- Registered trademark owned by the United Kingdom's – Office of Government Commerce
- Widely used approach for IT Service Management – service desk, application management, IT operations, technical management
- Aimed at aligning IT services with business objectives
- Pre-scribes tasks, procedures and checklists (non organizational specific) used by an organization to establish a minimum level of competency
- Implemented worldwide - by organizations (certified practitioners)
- Reference – www.itil-officialsite.com/



- ISACA maintains COBIT, which helps IT professionals and enterprise leaders fulfill their IT governance and management responsibilities, and delivers value to business
 - Created by Information Systems Audit and Control Association (ISACA) -1967
 - Original acronym “COBIT” (**C**ontrol **OB**jectives for **I**nformation and related **T**echnology) - 1967
 - Pre-defined processes used to manage Information Technology
 - Four IT Domains (Plan and Organize, Acquire and Implement, Deliver and Support, Monitor and Evaluate)
 - Implemented around the world
 - Reference - <http://www.isaca.org/Knowledge-Center/COBIT/Pages/Overview.aspx>

Frameworks – Summary



- **ISO (xxx)**
 - Largest developer and publisher of international standards, multiple frameworks including 9001 – Quality Management, 14001 – Environmental Management
- **SEI/CMMI**
 - Software Engineering, computer security, process management and improvement
- **Six Sigma**
 - Improve the quality of business and manufacturing process outputs by identifying and removing the causes of process defects (errors) and minimizing variability
- **ITIL**
 - Aimed at aligning IT services with business objectives, widely used approach for IT Service Management – service desk, application management, IT operations, technical management
- **COBIT**
 - Helps IT professionals and enterprise leaders fulfill their IT governance and management responsibilities, and delivers value to business

A Context for IT Methodology

Concepts I – Agenda



- ▶ **IT Methodology - general context**
- ▶ IT Methodology - as a “noun” and a “verb”
- ▶ IT Methodology constructs and hierarchy - “noun” (lifecycles, phases, deliverables)
- ▶ IT Methodology - “verb” (waterfall, agile, spiral, RAD)
- ▶ IT Methodology structure & deliverable examples - “noun” (project management, software development, software testing)
- ▶ IT Methodology - organizational compatibility and benefits
- ▶ Recap

A Context for IT Methodology

Concepts I – Agenda



- ▶ IT Methodology - general context
- ▶ **IT Methodology - as a “noun” and a “verb”**
- ▶ IT Methodology constructs and hierarchy - “noun” (lifecycles, phases, deliverables)
- ▶ IT Methodology - “verb” (waterfall, agile, spiral, RAD)
- ▶ IT Methodology structure & deliverable examples - “noun” (project management, software development, software testing)
- ▶ IT Methodology - organizational compatibility and benefits
- ▶ Recap

IT Methodology Context



- **Organizational Frameworks**
 - ISO(900XXX), CMMI, Six-Sigma, ITIL, COBIT
- **Methodologies/Lifecycles (noun)**
 - Rational Unified Process (RUP), QAlassist (IM), PMI, Prince2
- **Methodologies/Lifecycles (verb)**
 - Waterfall, Spiral, Agile, RAD, etc

IT Methodology Context



- **Organizational Frameworks**
 - ISO(900XXX), CMMI, Six-Sigma, ITIL, COBIT
- **Methodologies/Lifecycles (noun)**
 - Rational Unified Process (RUP), QAlassist (IM), PMI, Prince2
- **Methodologies/Lifecycles (verb)**
 - Waterfall, Spiral, Agile, RAD, etc

IT Methodology – noun & verb



IT Methodology – Map & Journey



Methodologies/Lifecycles - “noun”

- The roadmap
- Rational Unified Process (RUP), QAlassist (IM) , PMI, Prince2

Methodologies/Lifecycles - “verb”

- The journey taken along the road
- Waterfall, Spiral, Agile, RAD , Prototyping, etc

A Context for IT Methodology

Concepts I – Agenda



- ▶ IT Methodology - general context
- ▶ **IT Methodology - as a “noun” and a “verb”**
- ▶ IT Methodology constructs and hierarchy - “noun” (lifecycles, phases, deliverables)
- ▶ IT Methodology - “verb” (waterfall, agile, spiral, RAD)
- ▶ IT Methodology structure & deliverable examples - “noun” (project management, software development, software testing)
- ▶ IT Methodology - organizational compatibility and benefits
- ▶ Recap

A Context for IT Methodology

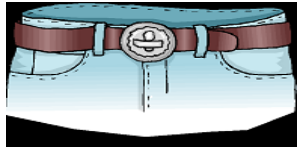
Concepts I – Agenda



- ▶ IT Methodology - general context
- ▶ IT Methodology - as a “noun” and a “verb”
- ▶ **IT Methodology constructs and hierarchy - “noun” (lifecycles, phases, deliverables)**
- ▶ IT Methodology - “verb” (waterfall, agile, spiral, RAD)
- ▶ IT Methodology structure & deliverable examples - “noun” (project management, software development, software testing)
- ▶ IT Methodology - organizational compatibility and benefits
- ▶ Recap

IT Methodology – ‘Noun’

Getting Dressed Analogy



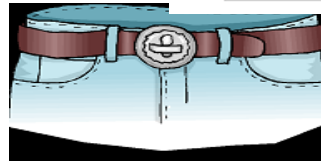
- ▶ **Footwear** (shoes, sandals, etc.)
- ▶ **Outer wear** (jacket, coat, etc.)
- ▶ **Leg Wear** (pants, skirt, etc.)
- ▶ **Torso Wear** (shirt, sweater, etc.)
- ▶ **Underwear** (briefs, boxers, etc.)
- ▶ **Headwear** (hat, visor, etc.)

IT Methodology – ‘Noun’

Getting Dressed Analogy



- ▶ Would you put on Outer wear before Torso wear ?
- ▶ Would you put on Footwear before Leg wear ?
- ▶ Would you put on Headwear before Underwear ?



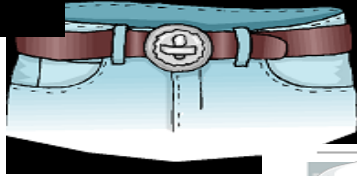


► Which of the following sequences would you use to get dressed ?

- (a) head wear, footwear, torso wear, outer wear, underwear, leg wear
- (b) footwear, torso wear, outer wear, underwear, leg wear, headwear
- (c) torso wear, outer wear, headwear, footwear, underwear, leg wear
- (d) underwear, leg wear, headwear, footwear, outer wear, torso wear
- (e) none of the above

IT Methodology – ‘Noun’

Quiz I – Sequence Matters



- ▶ **Underwear** (briefs, boxers, etc.)
- ▶ **Leg-wear** (pants, skirt, etc.)
- ▶ **Torso-wear** (shirt, sweater, etc.)
- ▶ **Outerwear** (jacket, coat, etc.)
- ▶ **Headwear** (hat, visor, etc.)
- ▶ **Footwear** (shoes, sandals, etc.)

IT Methodology/Lifecycle - Noun



- ▶ All Methodologies/Lifecycles (RUP, QAIassist-IM, PMI, Prince2) define, utilize and rely on their own pre-defined structure, naming conventions, and terminology
- ▶ Hierarchy/Structure
 - Methodology/Lifecycle (ie Project Management, Software Development, Software Testing)
 - Phase/Stage (ie Initiate, Planning, Design, Closeout)
 - Deliverable/Artifact/Work Product (ie Project Charter, Testing Strategy)
 - Activity (tasks performed to complete deliverables, artifacts, work products)

“Deliverable/Artifact/Work Product” versus “Activity”



Building a House

- Deliverable (Artifact, Work Product)
 - Blue Prints
 - Foundation completed
 - Windows installed

- Activity (non-Deliverable, non-Artifact, non Work Product)
 - Meeting with Architect to review Blue Prints
 - Mixing concrete to pour the foundation
 - Authorizing purchase of the wood needed to complete the window frame

“Deliverable/Artifact/Work Product” versus “Activity”



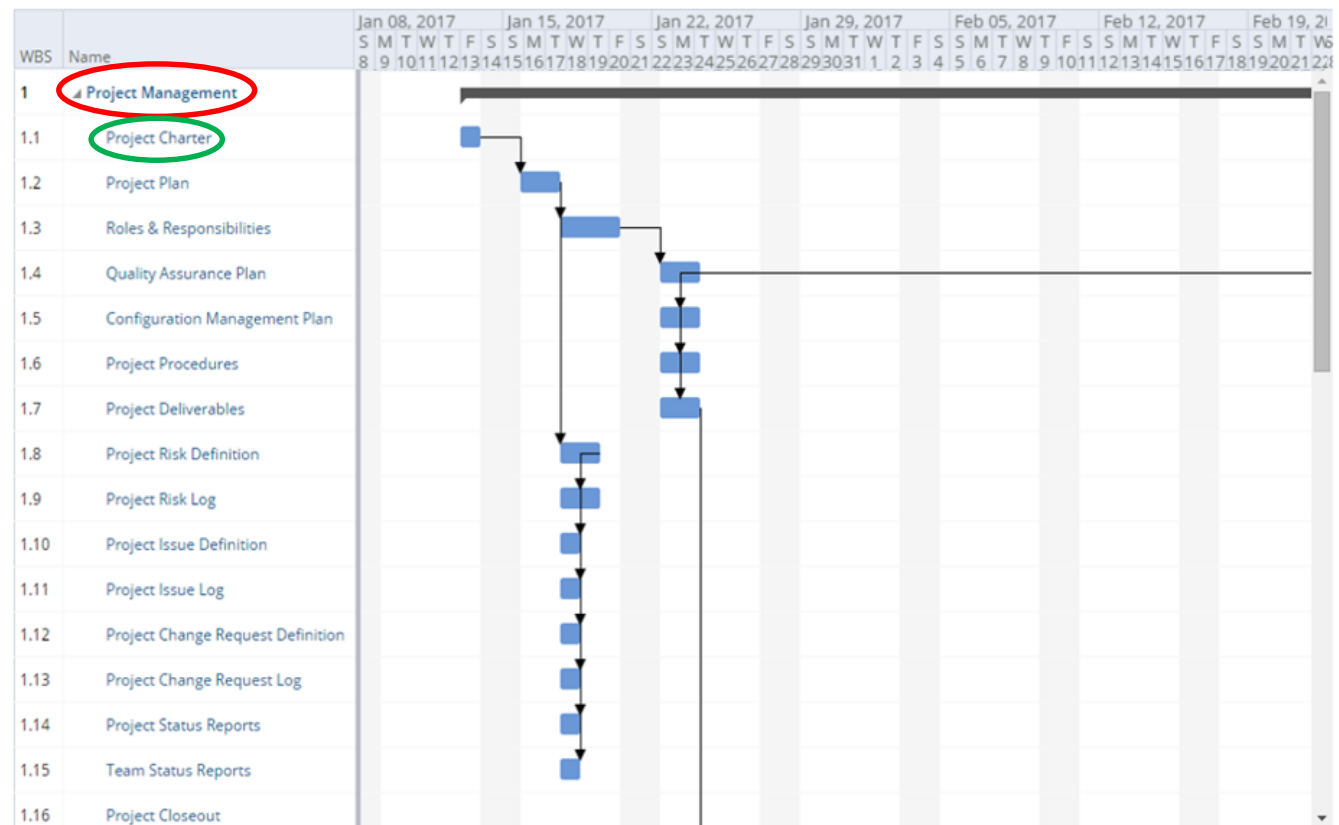
Building an IT Application

● Deliverable (Artifact, Work Product)

- Business Case
- Project Plan
- User Acceptance Test Plan

● Activity (non-Deliverable, non-Artifact, non Work Product)

- Reviewing business need with Operational Management, Business Analysts and End-Users
- Meeting with Stakeholders to acquire approval of Project Plan
- Discussing User Acceptance Testing objectives and priorities with testing team





Software Development



Gantt Chart



Views ▾



Resources ▾



“Deliverable/Artifact/Work Product” Status



- **Draft** - Deliverable has been identified, assigned and is in the process of being drafted/completed
- **Review** - “Draft” deliverable has been completed and submitted for “review” and “authorization”
- **Approved/Archived** - “Reviewed” deliverable has been “Authorized” by designated stakeholders and put under configuration management
- **Applied** - Information within “Authorized” deliverable is being referenced and/or utilized within another deliverable

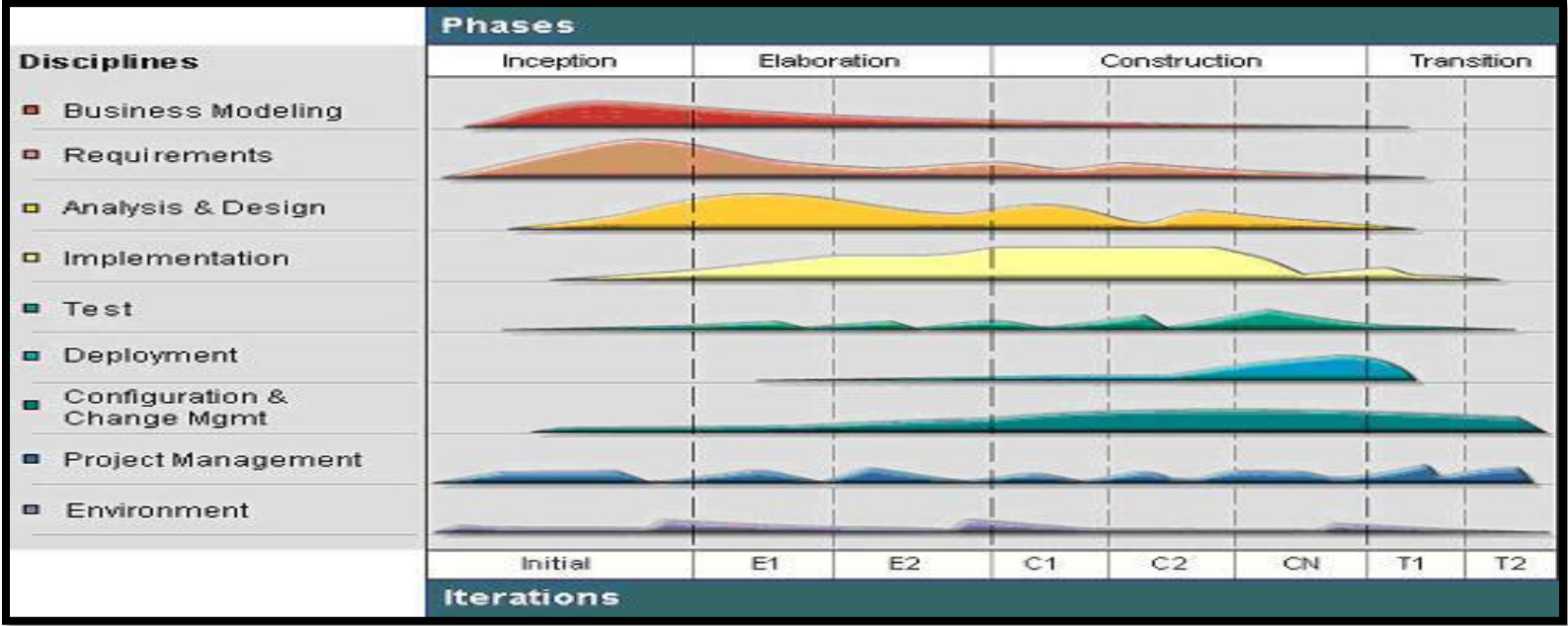
“Deliverable/Artifact/Work Product” Attributes



► **Tangible (pre-defined informational requirements)**

- can be identified and defined (resource, completion dates, cost) on Project Schedule
- can be assigned (populating information requirements) to project team member(s)
- can be referenced by project team members to support creation of other deliverables
- can be formally reviewed and officially authorized
- will alter in status (authored, reviewed, approved, archived, referenced) throughout life of project
- Project Schedule used to reflect evolving deliverable status/progress (risks, issues, percentage complete)
- can be placed under formal configuration management – re: with evolving status
- can be accessed for future reference (application support and maintenance)

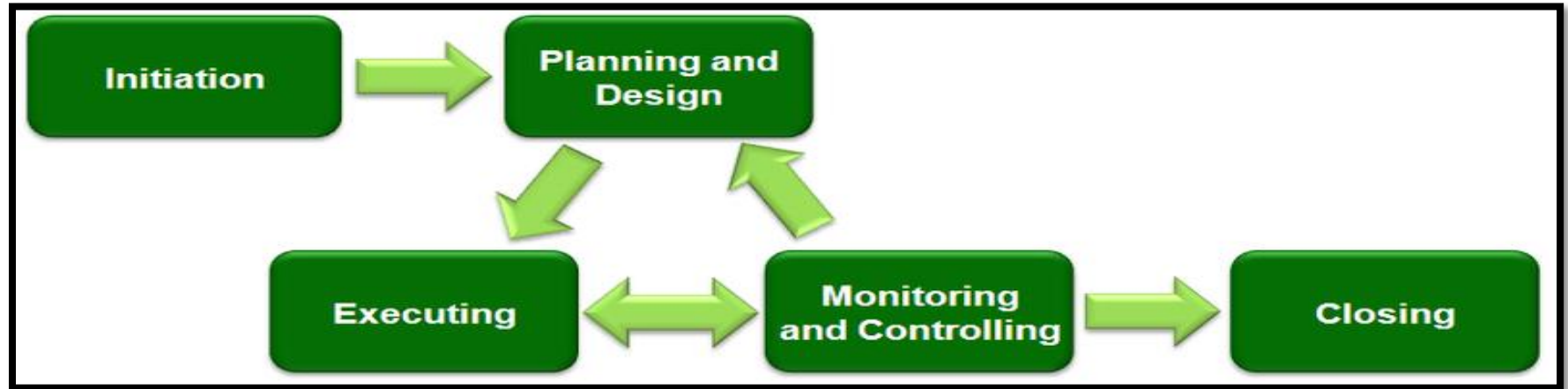
Noun – IBM's Rational Unified Process (RUP)



Noun – IBM's Rational Unified Process (RUP)



- ▶ Iterative software development process used by project teams for developing software
- ▶ Origin/Objectives
 - Developed by Rational Software (division of IBM) – 2003
 - Software development and maintenance
 - Adaptive approach (Rational) applying the Unified Process
 - Implemented around the world
 - Primarily leveraged by large sized business
 - Reference - <http://www-01.ibm.com/software/awdtools/rup/>

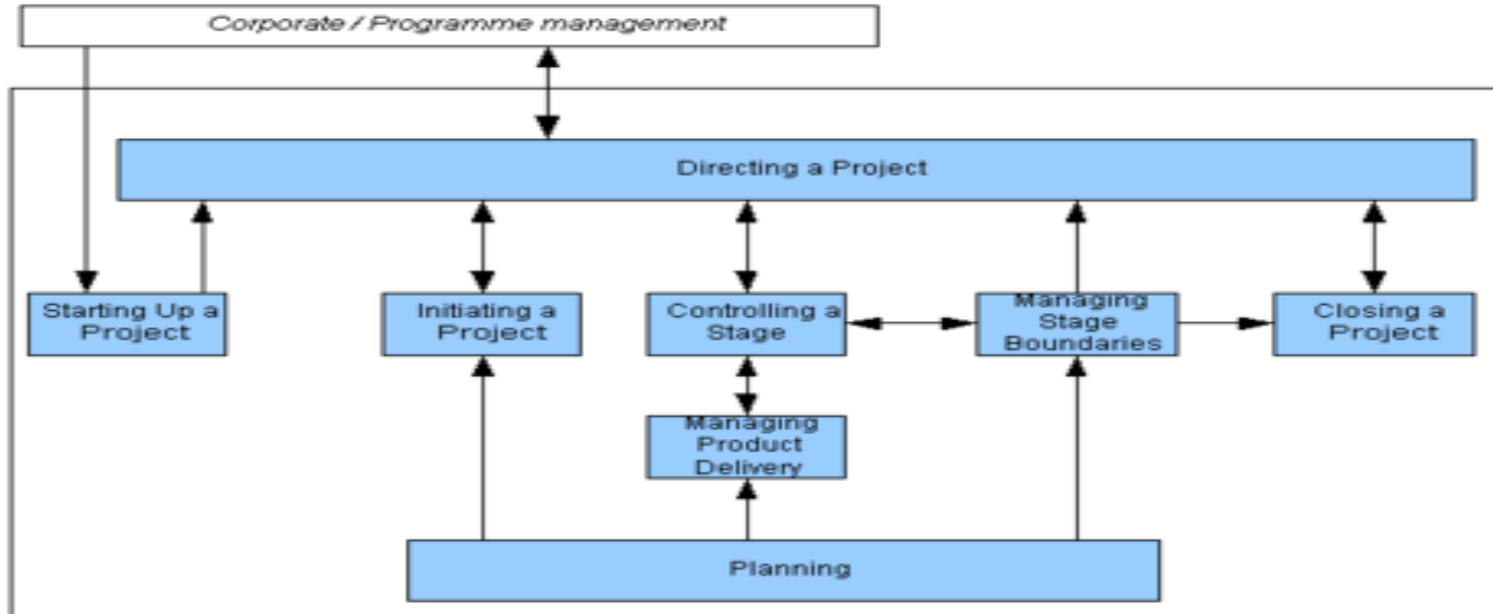


Noun - Project Management Institute (PMI) Methodology



- ▶ Create and maintain standards that provide processes, guidelines, rules and characteristics for project management (US based)
- ▶ Origin/Objectives
 - Establish and promote Project Management standards & best practices
 - Maintain a Project Management Body of Knowledge
 - Train and Certify Project Management practitioners (PMP designation)
 - Ensure certified practitioners remain current and informed on project management practices
 - Reference - <http://www.pmi.org/>

Noun – Prince2 – Project Management Methodology



Noun – Prince2 – Project Management Methodology



- Structured Project Management Method endorsed by the UK government as the project management standard for public projects (UK based)
- Origin/Objectives
 - Acronym for “**P**rojects **I**N **C**ontrolled **E**nvironments **2**”
 - Encompasses the management, control and organization of a project
 - Process driven Project Management Methodology
 - Complementary to PMI conventions
 - Reference - <http://www.prince-officialsite.com/>

QAlassist Integrated Methodology



QAlassist Integrated Methodology

	Initiate	Plan	Execute & Control		Closeout
Project Management	Business Case Detailed Business Req'ts	Project Charter Project Plan Project Schedule/VBS Roles & Responsibilities Project Deliverables Config. Management Plan Quality Assurance Plan Project Procedures	All previously created PM deliverables Project Risk Definition Project Risk Log Project Issue Definition Project Issue Log Project Change Request Definition Project Change Request Log		Project Closeout Team Status Report Project Status Report Unit Test (UT) Authorization System Integration Test (SIT) Authorization User Acceptance Test (UAT) Authorization
	Systems Analysis	Design	Build	Test	Release
Software Development	Entry Deliverables Business Case Project Charter Detailed Business Requirements Exit Deliverables High Level Solution Design Reqmt's Traceability Log	Entry Deliverables High Level Solution Design Reqmt's Traceability Log Exit Deliverables Detailed Solution Design Programming Specifications Reqmt's Traceability Log	Entry Deliverables Detailed Solution Design Programming Specifications Reqmt's Traceability Log Exit Deliverables Unit Code Training & Support Plan Reqmt's Traceability Log	Entry Deliverables Unit Code (UT) Plan (UT) Evaluation Criteria Reqmt's Traceability Log Exit Deliverables Unit Code (UT) Evaluation Criteria (UT) Defect Log Reqmt's Traceability Log	Entry Deliverables Unit Code (UT) Defect Log Reqmt's Traceability Log Exit Deliverables Unit Code Reqmt's Traceability Log (UT) Authorization
Software Testing	Entry Deliverables Business Case Project Charter Detailed Business Reqmt's Exit Deliverables Testing Strategy (UAT) Plan (UAT) Evaluation Criteria	Entry Deliverables High Level Solution Design Testing Strategy Exit Deliverables (SIT) Plan (SIT) Evaluation Criteria	Entry Deliverables Detailed Solution Design Programming Specifications Reqmt's Traceability Log Exit Deliverables (UT) Plan (UT) Evaluation Criteria Reqmt's Traceability Log	Entry Deliverables Unit Code (UT) Authorization (SIT) Plan (SIT) Evaluation Criteria Exit Deliverables (SIT) Evaluation Criteria (SIT) Defect Log (SIT) Authorization Reqmt's Traceability Log	Entry Deliverables Unit Code (SIT) Authorization (UAT) Plan (UAT) Evaluation Criteria Exit Deliverables (UAT) Evaluation Criteria (UAT) Defect Log (UAT) Authorization Reqmt's Traceability Log

Noun – Summary



- Rational Unified Process (RUP) - iterative software development process used by project teams for developing software
- PMI - create and maintain standards that provide processes, guidelines, rules and characteristics for project management (US based)
- Prince2 - Structured Project Management Method endorsed by the UK government as the project management standard for public projects (UK based)
- QAlassist Integrated Methodology (IM) - integrated (project management, software development, software testing) methodology to increase IT performance



Noun – QAlassist – Integrated Methodology (IM)



- Scalable integrated (project management, software development, software testing) IT methodology to increase operational performance through and efficient development and maintenance of business products/applications/functionality
- Origin/Objectives
 - Establish and promote IT Methodology standards & best practices
 - Maintain an IT Methodology Body of Knowledge
 - Train and Certify IT Methodology constituency (“Foundation” & “Practitioner”)
 - Ensure certified practitioners remain current on IT Methodology practices
 - Reference - http://www.qaiassist.com/integrated_methodology.html



Noun – Quiz II



► Which of the following IT methodologies (noun) would deliver the greatest benefit ?

- (a) Rational Unified Process (RUP)
- (b) Prince2
- (c) PMI
- (d) QAlassist-IM
- (e) it depends

A Context for IT Methodology

Concepts I – Agenda



- ▶ IT Methodology - general context
- ▶ IT Methodology - as a “noun” and a “verb”
- ▶ **IT Methodology constructs and hierarchy - “noun” (lifecycles, phases, deliverables)**
- ▶ IT Methodology - “verb” (waterfall, agile, spiral, RAD)
- ▶ IT Methodology structure & deliverable examples - “noun” (project management, software development, software testing)
- ▶ IT Methodology - organizational compatibility and benefits
- ▶ Recap

A Context for IT Methodology

Concepts I – Agenda



- ▶ IT Methodology - general context
- ▶ IT Methodology - as a “noun” and a “verb”
- ▶ IT Methodology constructs and hierarchy - “noun” (lifecycles, phases, deliverables)
- ▶ **IT Methodology - “verb” (waterfall, agile, spiral, RAD)**
- ▶ IT Methodology structure & deliverable examples - “noun” (project management, software development, software testing)
- ▶ IT Methodology - organizational compatibility and benefits
- ▶ Recap

IT Methodology – Map & Journey



Methodologies/Lifecycles - “noun”

- The roadmap
- Rational Unified Process (RUP), QAlassist (IM) , PMI, Prince2

Methodologies/Lifecycles - “verb”

- The journey taken along the road
- Waterfall, Spiral, Agile, RAD , Prototyping, etc

IT Methodology – Map & Journey



Methodologies/Lifecycles - “noun”

- The roadmap
- Rational Unified Process (RUP), QAlassist (IM) , PMI, Prince2

Methodologies/Lifecycles - “verb”

- The journey taken along the road
- Waterfall, Spiral, Agile, RAD , Prototyping, etc

Methodology/Lifecycle – Verb



▶ “Waterfall” Methodology/Lifecycle

- a single iteration through the methodology/lifecycle (noun)
- deliverables/artifacts defined, assigned, and documented
- formal structure required

▶ “Agile” Methodology/Lifecycle

- more than a single iteration through a methodology/lifecycle (noun)
- limited deliverable creation
- formal structure not required

Methodology/Lifecycle – Sample Project



► Design, Build and Test an Accounting Application

- Functionality 1 Accounts Receivable
- Functionality 2 Accounts Payable
- Functionality 3 Payroll

Methodology/Lifecycle – Verb



► “Waterfall” Methodology/Lifecycle

- a single iteration through the methodology/lifecycle (noun)
- deliverables/artifacts defined, assigned, and documented
- formal structure required

► “Agile” Methodology/Lifecycle

- more than a single iteration through a methodology/lifecycle (noun)
- limited deliverable creation
- formal structure not required

QAlassist Integrated Methodology



QAlassist Integrated Methodology

	Initiate	Plan	Execute & Control		Closeout
Project Management	Business Case Detailed Business Req'ts	Project Charter Project Plan Project Schedule/VBS Roles & Responsibilities Project Deliverables Config. Management Plan Quality Assurance Plan Project Procedures	All previously created PM deliverables Project Risk Definition Project Risk Log Project Issue Definition Project Issue Log Project Change Request Definition Project Change Request Log		Project Closeout
	Systems Analysis	Design	Build	Test	Release
Software Development	Entry Deliverables Business Case Project Charter Detailed Business Requirements Exit Deliverables High Level Solution Design Reqmt's Traceability Log	Entry Deliverables High Level Solution Design Reqmt's Traceability Log Exit Deliverables Detailed Solution Design Programming Specifications Reqmt's Traceability Log	Entry Deliverables Detailed Solution Design Programming Specifications Reqmt's Traceability Log Exit Deliverables Unit Code Training & Support Plan Reqmt's Traceability Log	Entry Deliverables Unit Code (UT) Plan (UT) Evaluation Criteria Reqmt's Traceability Log Exit Deliverables Unit Code (UT) Evaluation Criteria (UT) Defect Log Reqmt's Traceability Log	Entry Deliverables Unit Code (UT) Defect Log Reqmt's Traceability Log Exit Deliverables Unit Code Reqmt's Traceability Log (UT) Authorization
Software Testing	Entry Deliverables Business Case Project Charter Detailed Business Reqmt's Exit Deliverables Testing Strategy (UAT) Plan (UAT) Evaluation Criteria	Entry Deliverables High Level Solution Design Testing Strategy Exit Deliverables (SIT) Plan (SIT) Evaluation Criteria	Entry Deliverables Detailed Solution Design Programming Specifications Reqmt's Traceability Log Exit Deliverables (UT) Plan (UT) Evaluation Criteria Reqmt's Traceability Log	Entry Deliverables Unit Code (UT) Authorization (SIT) Plan (SIT) Evaluation Criteria Exit Deliverables (SIT) Evaluation Criteria (SIT) Defect Log (SIT) Authorization Reqmt's Traceability Log	Entry Deliverables Unit Code (SIT) Authorization (UAT) Plan (UAT) Evaluation Criteria Exit Deliverables (UAT) Evaluation Criteria (UAT) Defect Log (UAT) Authorization Reqmt's Traceability Log

IT Methodology - Waterfall

One Iteration (Accounts Receivable, Accounts Payable, Payroll)

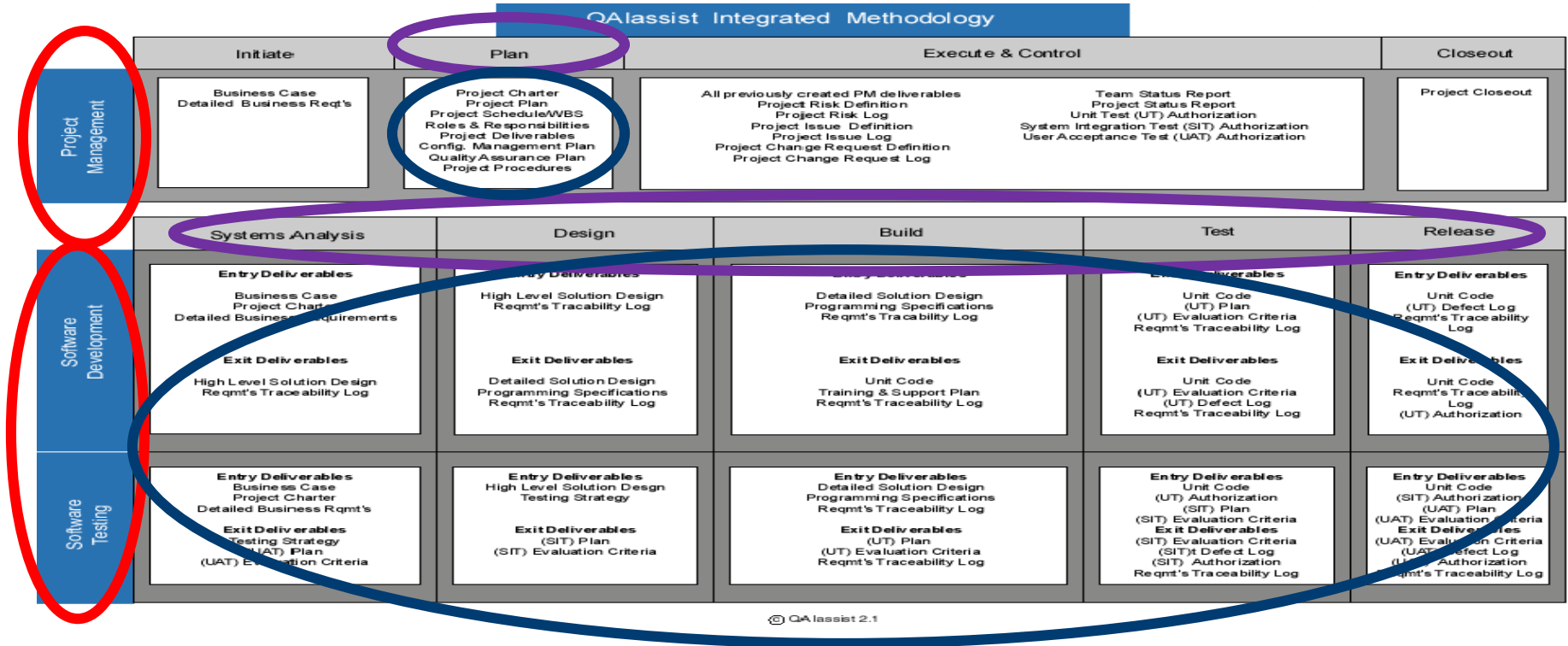


QAlassist Integrated Methodology

	QAlassist Integrated Methodology				
	Initiate	Plan	Execute & Control		Closeout
Project Management	Business Case Detailed Business Req'ts	Project Charter Project Plan Project Schedule/VBS Roles & Responsibilities Project Deliverables Config. Management Plan Quality Assurance Plan Project Procedures	All previously created PM deliverables Project Risk Definition Project Risk Log Project Issue Definition Project Issue Log Project Change Request Definition Project Change Request Log		Project Closeout
	Systems Analysis	Design	Build	Test	Release
	Software Development	Software Development	Software Development	Software Development	Software Development
	Entry Deliverables	Entry Deliverables	Entry Deliverables	Entry Deliverables	Entry Deliverables
	Business Case Project Charter Detailed Business Requirements	High Level Solution Design Reqmt's Traceability Log	Detailed Solution Design Programming Specifications Reqmt's Traceability Log	Unit Code (UT) Plan (UT) Evaluation Criteria Reqmt's Traceability Log	Unit Code (UT) Defect Log Reqmt's Traceability Log
	Exit Deliverables	Exit Deliverables	Exit Deliverables	Exit Deliverables	Exit Deliverables
	High Level Solution Design Reqmt's Traceability Log	Detailed Solution Design Programming Specifications Reqmt's Traceability Log	Unit Code Training & Support Plan Reqmt's Traceability Log	Unit Code (UT) Evaluation Criteria (UT) Defect Log Reqmt's Traceability Log	Unit Code Reqmt's Traceability Log (UT) Authorization
	Entry Deliverables	Entry Deliverables	Entry Deliverables	Entry Deliverables	Entry Deliverables
	Business Case Project Charter Detailed Business Reqmt's	High Level Solution Design Testing Strategy	Detailed Solution Design Programming Specifications Reqmt's Traceability Log	Unit Code (UT) Authorization (SIT) Plan (SIT) Evaluation Criteria	Unit Code (SIT) Authorization (UAT) Plan (UAT) Evaluation Criteria
	Exit Deliverables	Exit Deliverables	Exit Deliverables	Exit Deliverables	Exit Deliverables
	Testing Strategy (UAT) Plan (UAT) Evaluation Criteria	(SIT) Plan (SIT) Evaluation Criteria	(UT) Plan (UT) Evaluation Criteria Reqmt's Traceability Log	(SIT) Evaluation Criteria (SIT) Defect Log (SIT) Authorization Reqmt's Traceability Log	(UAT) Evaluation Criteria (UAT) Defect Log (UAT) Authorization Reqmt's Traceability Log

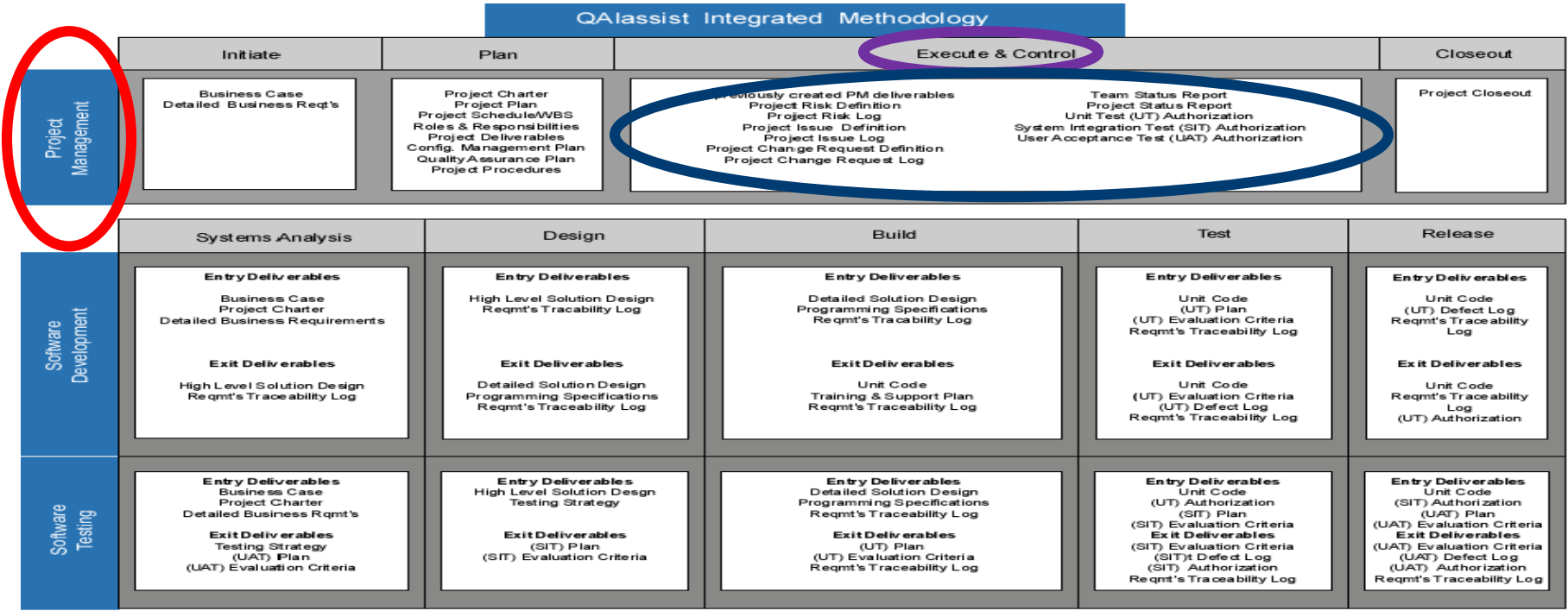
IT Methodology - Waterfall

One Iteration (Accounts Receivable, Accounts Payable, Payroll)



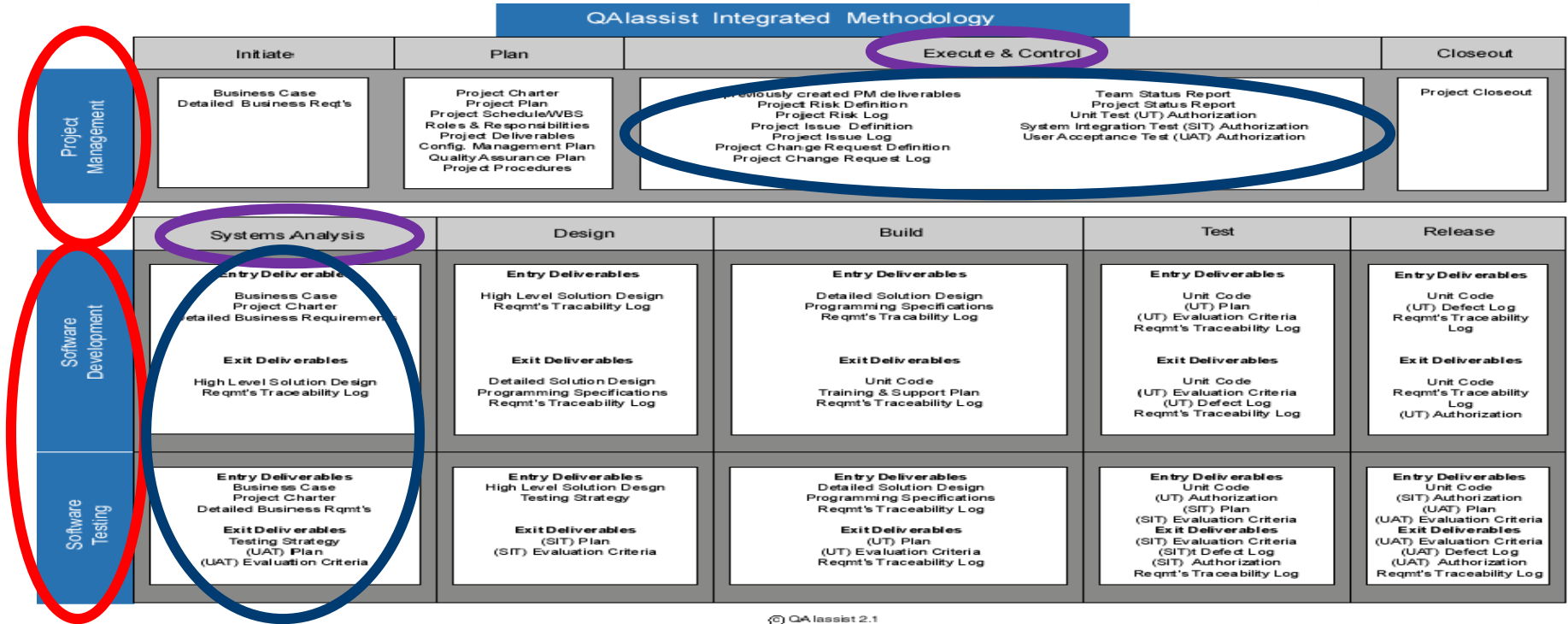
IT Methodology - Waterfall

One Iteration (Accounts Receivable, Accounts Payable, Payroll)



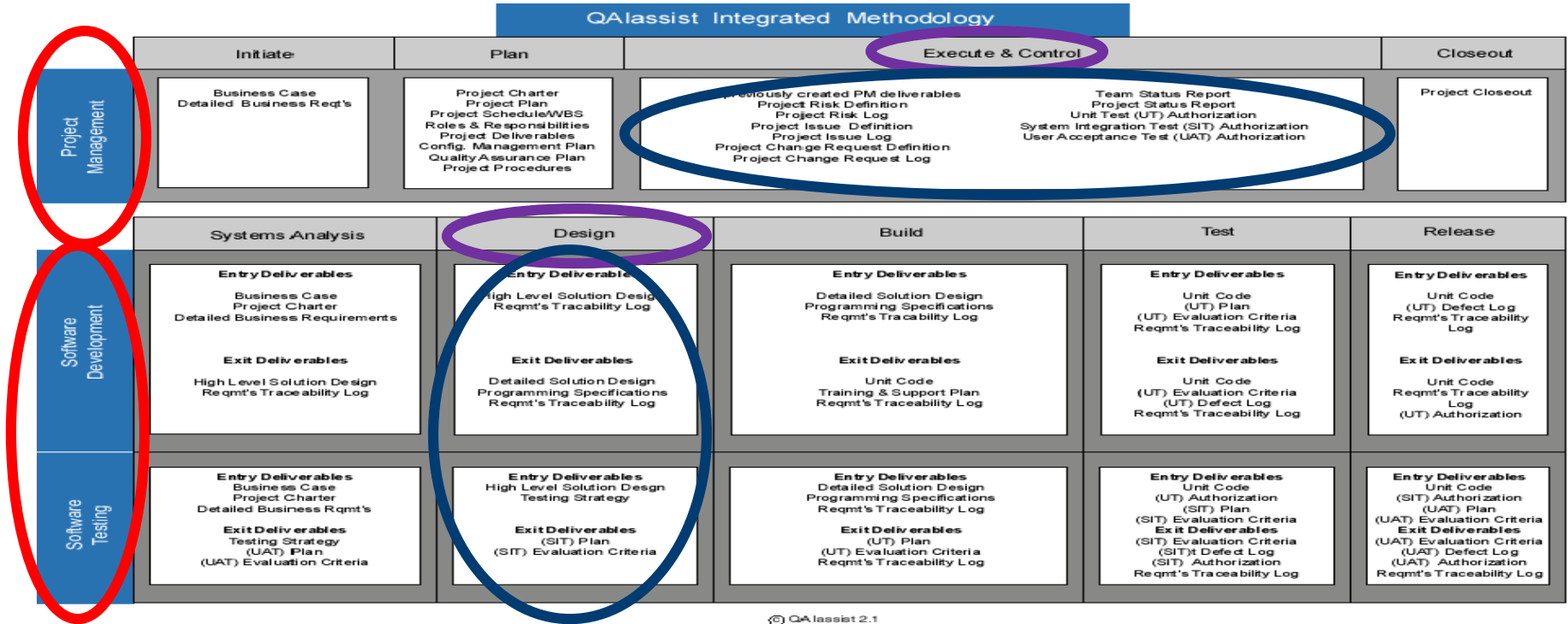
IT Methodology - Waterfall

One Iteration (Accounts Receivable, Accounts Payable, Payroll)



IT Methodology - Waterfall

One Iteration (Accounts Receivable, Accounts Payable, Payroll)



IT Methodology - Waterfall

One Iteration (Accounts Receivable, Accounts Payable, Payroll)



QAlassist Integrated Methodology

	Initiate	Plan	Execute & Control	Closeout	
Project Management	Business Case Detailed Business Req'ts	Project Charter Project Plan Project Schedule/WBS Roles & Responsibilities Project Deliverables Config. Management Plan Quality Assurance Plan Project Procedures	Previously created PM deliverables Project Risk Definition Project Risk Log Project Issue Definition Project Issue Log Project Change Request Definition Project Change Request Log Team Status Report Project Status Report Unit Test (UT) Authorization System Integration Test (SIT) Authorization User Acceptance Test (UAT) Authorization	Project Closeout	
	Systems Analysis	Design	Build	Test	Release
Software Development	Entry Deliverables Business Case Project Charter Detailed Business Requirements Exit Deliverables High Level Solution Design Reqmt's Traceability Log	Entry Deliverables High Level Solution Design Reqmt's Traceability Log Exit Deliverables Detailed Solution Design Programming Specifications Reqmt's Traceability Log	Entry Deliverables Detailed Solution Design Programming Specifications Reqmt's Traceability Log Exit Deliverables Unit Code Training & Support Plan Reqmt's Traceability Log	Entry Deliverables Unit Code (UT) Plan (UT) Evaluation Criteria Reqmt's Traceability Log Exit Deliverables Unit Code (UT) Evaluation Criteria (UT) Defect Log Reqmt's Traceability Log	Entry Deliverables Unit Code (UT) Defect Log Reqmt's Traceability Log Exit Deliverables Unit Code Reqmt's Traceability Log (UT) Authorization
Software Testing	Entry Deliverables Business Case Project Charter Detailed Business Reqmt's Exit Deliverables Testing Strategy (UAT) Plan (UAT) Evaluation Criteria	Entry Deliverables High Level Solution Design Testing Strategy Exit Deliverables (SIT) Plan (SIT) Evaluation Criteria	Entry Deliverables Detailed Solution Design Programming Specifications Reqmt's Traceability Log Exit Deliverables (UT) Plan (UT) Evaluation Criteria Reqmt's Traceability Log	Entry Deliverables Unit Code (UT) Authorization (SIT) Plan (SIT) Evaluation Criteria Exit Deliverables (SIT) Evaluation Criteria (SIT) Defect Log (SIT) Authorization Reqmt's Traceability Log	Entry Deliverables Unit Code (SIT) Authorization (UAT) Plan (UAT) Evaluation Criteria Exit Deliverables (UAT) Evaluation Criteria (UAT) Defect Log (UAT) Authorization Reqmt's Traceability Log

IT Methodology - Waterfall

One Iteration (Accounts Receivable, Accounts Payable, Payroll)



QAlassist Integrated Methodology

	Initiate	Plan	Execute & Control	Closeout	
Project Management	Business Case Detailed Business Req'ts	Project Charter Project Plan Project Schedule/WBS Roles & Responsibilities Project Deliverables Config. Management Plan Quality Assurance Plan Project Procedures	Previously created PM deliverables Project Risk Definition Project Risk Log Project Issue Definition Project Issue Log Project Change Request Definition Project Change Request Log	Team Status Report Project Status Report Unit Test (UT) Authorization System Integration Test (SIT) Authorization User Acceptance Test (UAT) Authorization	Project Closeout
	Systems Analysis	Design	Build	Test	Release
Software Development	Entry Deliverables Business Case Project Charter Detailed Business Requirements Exit Deliverables High Level Solution Design Reqmt's Traceability Log	Entry Deliverables High Level Solution Design Reqmt's Traceability Log Exit Deliverables Detailed Solution Design Programming Specifications Reqmt's Traceability Log	Entry Deliverables Detailed Solution Design Programming Specifications Reqmt's Traceability Log Exit Deliverables Unit Code Training & Support Plan Reqmt's Traceability Log	Entry Deliverables Unit Code (UT) Plan (UT) Evaluation Criteria Reqmt's Traceability Log Exit Deliverables Unit Code (UT) Evaluation Criteria (UT) Defect Log Reqmt's Traceability Log	Entry Deliverables Unit Code (UT) Defect Log Reqmt's Traceability Log Exit Deliverables Unit Code Reqmt's Traceability Log (UT) Authorization
Software Testing	Entry Deliverables Business Case Project Charter Detailed Business Reqmt's Exit Deliverables Testing Strategy (UAT) Plan (UAT) Evaluation Criteria	Entry Deliverables High Level Solution Design Testing Strategy Exit Deliverables (SIT) Plan (SIT) Evaluation Criteria	Entry Deliverables Detailed Solution Design Programming Specifications Reqmt's Traceability Log Exit Deliverables (UT) Plan (UT) Evaluation Criteria Reqmt's Traceability Log	Entry Deliverables Unit Code (UT) Authorization (SIT) Plan (SIT) Evaluation Criteria Exit Deliverables (SIT) Evaluation Criteria (SIT) Defect Log (SIT) Authorization Reqmt's Traceability Log	Entry Deliverables Unit Code (SIT) Authorization (UAT) Plan (UAT) Evaluation Criteria Exit Deliverables (UAT) Evaluation Criteria (UAT) Defect Log (UAT) Authorization Reqmt's Traceability Log

IT Methodology - Waterfall

One Iteration (Accounts Receivable, Accounts Payable, Payroll)



QAlassist Integrated Methodology

	Initiate	Plan	Execute & Control	Closeout	
Project Management	Business Case Detailed Business Req'ts	Project Charter Project Plan Project Schedule/WBS Roles & Responsibilities Project Deliverables Config. Management Plan Quality Assurance Plan Project Procedures	Previously created PM deliverables Project Risk Definition Project Risk Log Project Issue Definition Project Issue Log Project Change Request Definition Project Change Request Log	Team Status Report Project Status Report Unit Test (UT) Authorization System Integration Test (SIT) Authorization User Acceptance Test (UAT) Authorization	Project Closeout
	Systems Analysis	Design	Build	Test	Release
Software Development	Entry Deliverables Business Case Project Charter Detailed Business Requirements Exit Deliverables High Level Solution Design Reqmt's Traceability Log	Entry Deliverables High Level Solution Design Reqmt's Traceability Log Exit Deliverables Detailed Solution Design Programming Specifications Reqmt's Traceability Log	Entry Deliverables Detailed Solution Design Programming Specifications Reqmt's Traceability Log Exit Deliverables Unit Code Training & Support Plan Reqmt's Traceability Log	Entry Deliverables Unit Code (UT) Plan (UT) Evaluation Criteria Reqmt's Traceability Log Exit Deliverables Unit Code (UT) Evaluation Criteria (UT) Defect Log Reqmt's Traceability Log	Entry Deliverables Unit Code (UT) Defect Log Reqmt's Traceability Log Exit Deliverables Unit Code Reqmt's Traceability Log (UT) Authorization
Software Testing	Entry Deliverables Business Case Project Charter Detailed Business Reqmt's Exit Deliverables Testing Strategy (UAT) Plan (UAT) Evaluation Criteria	Entry Deliverables High Level Solution Design Testing Strategy Exit Deliverables (SIT) Plan (SIT) Evaluation Criteria	Entry Deliverables Detailed Solution Design Programming Specifications Reqmt's Traceability Log Exit Deliverables (UT) Plan (UT) Evaluation Criteria Reqmt's Traceability Log	Entry Deliverables Unit Code (UT) Authorization (SIT) Plan (SIT) Evaluation Criteria Exit Deliverables (SIT) Evaluation Criteria (SIT) Defect Log (SIT) Authorization Reqmt's Traceability Log	Entry Deliverables Unit Code (SIT) Authorization (UAT) Plan (UAT) Evaluation Criteria Exit Deliverables (UAT) Evaluation Criteria (UAT) Defect Log (UAT) Authorization Reqmt's Traceability Log

IT Methodology - Waterfall

One Iteration (Accounts Receivable, Accounts Payable, Payroll)



QAlassist Integrated Methodology

	Initiate	Plan	Execute & Control		Closeout
Project Management	Business Case Detailed Business Req'ts	Project Charter Project Plan Project Schedule/VBS Roles & Responsibilities Project Deliverables Config. Management Plan Quality Assurance Plan Project Procedures	All previously created PM deliverables Project Risk Definition Project Risk Log Project Issue Definition Project Issue Log Project Change Request Definition Project Change Request Log		Team Status Report Project Status Report Unit Test (UT) Authorization System Integration Test (SIT) Authorization User Acceptance Test (UAT) Authorization
	Systems Analysis	Design	Build	Test	Release
Software Development	Entry Deliverables Business Case Project Charter Detailed Business Requirements Exit Deliverables High Level Solution Design Reqmt's Traceability Log	Entry Deliverables High Level Solution Design Reqmt's Traceability Log Exit Deliverables Detailed Solution Design Programming Specifications Reqmt's Traceability Log	Entry Deliverables Detailed Solution Design Programming Specifications Reqmt's Traceability Log Exit Deliverables Unit Code Training & Support Plan Reqmt's Traceability Log	Entry Deliverables Unit Code (UT) Plan (UT) Evaluation Criteria Reqmt's Traceability Log Exit Deliverables Unit Code (UT) Evaluation Criteria (UT) Defect Log Reqmt's Traceability Log	Entry Deliverables Unit Code (UT) Defect Log Reqmt's Traceability Log Exit Deliverables Unit Code Reqmt's Traceability Log (UT) Authorization
Software Testing	Entry Deliverables Business Case Project Charter Detailed Business Reqmt's Exit Deliverables Testing Strategy (UAT) Plan (UAT) Evaluation Criteria	Entry Deliverables High Level Solution Design Testing Strategy Exit Deliverables (SIT) Plan (SIT) Evaluation Criteria	Entry Deliverables Detailed Solution Design Programming Specifications Reqmt's Traceability Log Exit Deliverables (UT) Plan (UT) Evaluation Criteria Reqmt's Traceability Log	Entry Deliverables Unit Code (UT) Authorization (SIT) Plan (SIT) Evaluation Criteria Exit Deliverables (SIT) Evaluation Criteria (SIT) Defect Log (SIT) Authorization Reqmt's Traceability Log	Entry Deliverables Unit Code (SIT) Authorization (UAT) Plan (UAT) Evaluation Criteria Exit Deliverables (UAT) Evaluation Criteria (UAT) Defect Log (UAT) Authorization Reqmt's Traceability Log

Methodology/Lifecycle – Verb



► “Waterfall” Methodology/Lifecycle

- a single iteration through the methodology/lifecycle (noun)
- deliverables/artifacts defined, assigned, and documented
- formal structure required

► “Agile” Methodology/Lifecycle

- more than a single iteration through a methodology/lifecycle (noun)
- limited deliverable creation
- formal structure not required

Methodology/Lifecycle – Verb



▶ “Waterfall” Methodology/Lifecycle

- a single iteration through the methodology/lifecycle (noun)
- deliverables/artifacts defined, assigned, and documented
- formal structure required

▶ “Agile” Methodology/Lifecycle

- more than a single iteration through a methodology/lifecycle (noun)
- limited deliverable creation
- formal structure not required

Methodology/Lifecycle – Sample Project



► Design. Build and Test an Accounting Application

- Functionality 1 Accounts Receivable
- Functionality 2 Accounts Payable
- Functionality 3 Payroll

Methodology/Lifecycle – Sample Project



► Design. Build and Test an Accounting Application

- | | |
|--------------------------|----------------------------|
| ▪ Functionality 1 | Accounts Receivable |
| ▪ Functionality 2 | Accounts Payable |
| ▪ Functionality 3 | Payroll |

QAlassist Integrated Methodology



QAlassist Integrated Methodology

	Initiate	Plan	Execute & Control		Closeout
Project Management	Business Case Detailed Business Req'ts	Project Charter Project Plan Project Schedule/WBS Roles & Responsibilities Project Deliverables Config. Management Plan Quality Assurance Plan Project Procedures	All previously created PM deliverables Project Risk Definition Project Risk Log Project Issue Definition Project Issue Log Project Change Request Definition Project Change Request Log		Team Status Report Project Status Report Unit Test (UT) Authorization System Integration Test (SIT) Authorization User Acceptance Test (UAT) Authorization Project Closeout
	Systems Analysis	Design	Build	Test	Release
Software Development	Entry Deliverables Business Case Project Charter Detailed Business Requirements Exit Deliverables High Level Solution Design Reqmt's Traceability Log	Entry Deliverables High Level Solution Design Reqmt's Tracability Log Exit Deliverables Detailed Solution Design Programming Specifications Reqmt's Traceability Log	Entry Deliverables Detailed Solution Design Programming Specifications Reqmt's Tracability Log Exit Deliverables Unit Code Training & Support Plan Reqmt's Traceability Log	Entry Deliverables Unit Code (UT) Plan (UT) Evaluation Criteria Reqmt's Traceability Log Exit Deliverables Unit Code (UT) Evaluation Criteria (UT) Defect Log Reqmt's Traceability Log	Entry Deliverables Unit Code (UT) Defect Log Reqmt's Traceability Log Exit Deliverables Unit Code Reqmt's Traceability Log (UT) Authorization
Software Testing	Entry Deliverables Business Case Project Charter Detailed Business Reqmt's Exit Deliverables Testing Strategy (SIT) Plan (UAT) Evaluation Criteria	Entry Deliverables High Level Solution Design Testing Strategy Exit Deliverables (SIT) Plan (SIT) Evaluation Criteria	Entry Deliverables Unit Code Detailed Solution Design Programming Specifications Reqmt's Traceability Log Exit Deliverables (UT) Plan (UT) Evaluation Criteria Reqmt's Traceability Log	Entry Deliverables Unit Code (UT) Authorization (SIT) Plan (SIT) Evaluation Criteria Exit Deliverables (SIT) Evaluation Criteria (SIT) Defect Log (SIT) Authorization Reqmt's Traceability Log	Entry Deliverables Unit Code (SIT) Authorization (UAT) Plan (UAT) Evaluation Criteria Exit Deliverables (UAT) Evaluation Criteria (UAT) Defect Log (UAT) Authorization Reqmt's Traceability Log

IT Methodology - Agile

1st Iteration (Accounts Receivable, Accounts Payable, Payroll)



QAlassist Integrated Methodology

	QAlassist Integrated Methodology				
	Initiate	Plan	Execute & Control		Closeout
Project Management	Business Case Detailed Business Req'ts	Project Charter Project Plan Project Schedule/VBS Roles & Responsibilities Project Deliverables Config. Management Plan Quality Assurance Plan Project Procedures	All previously created PM deliverables Project Risk Definition Project Risk Log Project Issue Definition Project Issue Log Project Change Request Definition Project Change Request Log		Team Status Report Project Status Report Unit Test (UT) Authorization System Integration Test (SIT) Authorization User Acceptance Test (UAT) Authorization
Software Development	Systems Analysis	Design	Build	Test	Release
	Entry Deliverables Business Case Project Charter Detailed Business Requirements Exit Deliverables High Level Solution Design Reqmt's Traceability Log	Entry Deliverables High Level Solution Design Reqmt's Traceability Log Exit Deliverables Detailed Solution Design Programming Specifications Reqmt's Traceability Log	Entry Deliverables Detailed Solution Design Programming Specifications Reqmt's Traceability Log Exit Deliverables Unit Code Training & Support Plan Reqmt's Traceability Log	Entry Deliverables Unit Code (UT) Plan (UT) Evaluation Criteria Reqmt's Traceability Log Exit Deliverables Unit Code (UT) Evaluation Criteria (UT) Defect Log Reqmt's Traceability Log	Entry Deliverables Unit Code (UT) Defect Log Reqmt's Traceability Log Exit Deliverables Unit Code Reqmt's Traceability Log (UT) Authorization
Software Testing	Entry Deliverables Business Case Project Charter Detailed Business Reqmt's Exit Deliverables Testing Strategy (UAT) Plan (UAT) Evaluation Criteria	Entry Deliverables High Level Solution Design Testing Strategy Exit Deliverables (SIT) Plan (SIT) Evaluation Criteria	Entry Deliverables Detailed Solution Design Programming Specifications Reqmt's Traceability Log Exit Deliverables (UT) Plan (UT) Evaluation Criteria Reqmt's Traceability Log	Entry Deliverables Unit Code (UT) Authorization (SIT) Plan (SIT) Evaluation Criteria Exit Deliverables (SIT) Evaluation Criteria (SIT) Defect Log (SIT) Authorization Reqmt's Traceability Log	Entry Deliverables Unit Code (SIT) Authorization (UAT) Plan (UAT) Evaluation Criteria Exit Deliverables (UAT) Evaluation Criteria (UAT) Defect Log (UAT) Authorization Reqmt's Traceability Log

IT Methodology - Agile

1st Iteration (Accounts Receivable, Accounts Payable, Payroll)



QAassist Integrated Methodology

	Initiate	Plan	Execute & Control		Closeout
Project Management	Business Case Detailed Business Req'ts	Project Charter Project Plan Project Schedule/VBS Roles & Responsibilities Project Deliverables Config. Management Plan Quality Assurance Plan Project Procedures	All previously created PM deliverables Project Risk Definition Project Risk Log Project Issue Definition Project Issue Log Project Change Request Definition Project Change Request Log		Project Closeout
Software Development	Systems Analysis	Design	Build	Test	Release
	Entry Deliverables Business Case Project Charter Detailed Business Requirements	Entry Deliverables High Level Solution Design Reqmt's Traceability Log	Entry Deliverables Detailed Solution Design Programming Specifications Reqmt's Traceability Log	Entry Deliverables Unit Code (UT) Plan (UT) Evaluation Criteria Reqmt's Traceability Log	Entry Deliverables Unit Code (UT) Defect Log Reqmt's Traceability Log
Software Testing	Exit Deliverables High Level Solution Design Reqmt's Traceability Log	Exit Deliverables Detailed Solution Design Programming Specifications Reqmt's Traceability Log	Exit Deliverables Unit Code Training & Support Plan Reqmt's Traceability Log	Exit Deliverables Unit Code (UT) Evaluation Criteria (UT) Defect Log Reqmt's Traceability Log	Exit Deliverables Unit Code Reqmt's Traceability Log (UT) Authorization
Software Testing	Entry Deliverables Business Case Project Charter Detailed Business Reqmt's	Entry Deliverables High Level Solution Design Testing Strategy	Entry Deliverables Detailed Solution Design Programming Specifications Reqmt's Traceability Log	Entry Deliverables Unit Code (UT) Authorization (SIT) Plan (SIT) Evaluation Criteria	Entry Deliverables Unit Code (SIT) Authorization (UAT) Plan (UAT) Evaluation Criteria
	Exit Deliverables Testing Strategy (UAT) Plan (UAT) Evaluation Criteria	Exit Deliverables (SIT) Plan (SIT) Evaluation Criteria	Exit Deliverables (UT) Plan (UT) Evaluation Criteria Reqmt's Traceability Log	Exit Deliverables (SIT) Evaluation Criteria (SIT) Defect Log (SIT) Authorization Reqmt's Traceability Log	Exit Deliverables (UAT) Evaluation Criteria (UAT) Defect Log (UAT) Authorization Reqmt's Traceability Log

IT Methodology - Agile

1st Iteration (Accounts Receivable)



QAassist Integrated Methodology

	Initiate	Plan	Execute & Control		Closeout
Project Management	Business Case Detailed Business Req'ts	Project Charter Project Plan Project Schedule/WBS Roles & Responsibilities Project Deliverables Config. Management Plan Quality Assurance Plan Project Procedures	Previously created PM deliverables Project Risk Definition Project Risk Log Project Issue Definition Project Issue Log Project Change Request Definition Project Change Request Log		Team Status Report Project Status Report Unit Test (UT) Authorization System Integration Test (SIT) Authorization User Acceptance Test (UAT) Authorization
Software Development	Entry Deliverables Business Case Project Charter Detailed Business Requirements Exit Deliverables High Level Solution Design Reqmt's Traceability Log	Entry Deliverables High Level Solution Design Reqmt's Tracability Log Exit Deliverables Detailed Solution Design Programming Specifications Reqmt's Traceability Log	Entry Deliverables Detailed Solution Design Programming Specifications Reqmt's Tracability Log Exit Deliverables Unit Code Training & Support Plan Reqmt's Traceability Log	Entry Deliverables Unit Code (UT) Plan (UT) Evaluation Criteria Reqmt's Traceability Log Exit Deliverables Unit Code (UT) Evaluation Criteria (UT) Defect Log Reqmt's Traceability Log	Entry Deliverables Unit Code (UT) Defect Log Reqmt's Traceability Log Exit Deliverables Unit Code Reqmt's Traceability (UT) Authorization
Software Testing	Entry Deliverables Business Case Project Charter Detailed Business Reqmt's Exit Deliverables Testing Strategy (UAT) Plan (UAT) Evaluation Criteria	Entry Deliverables High Level Solution Design Testing Strategy Exit Deliverables (SIT) Plan (SIT) Evaluation Criteria	Entry Deliverables Detailed Solution Design Programming Specifications Reqmt's Traceability Log Exit Deliverables (UT) Plan (UT) Evaluation Criteria Reqmt's Traceability Log	Entry Deliverables Unit Code (UT) Authorization (SIT) Plan (SIT) Evaluation Criteria Exit Deliverables (SIT) Evaluation Criteria (SIT) Defect Log (SIT) Authorization Reqmt's Tracability Log	Entry Deliverables Unit Code (SIT) Authorization (UAT) Plan (UAT) Evaluation Criteria Exit Deliverables (UAT) Evaluation Criteria (UAT) Defect Log (UAT) Authorization Reqmt's Traceability Log

IT Methodology - Agile

1st Iteration (Accounts Receivable)



QAassist Integrated Methodology

	Initiate	Plan	Execute & Control	Closeout
Project Management	Business Case Detailed Business Req'ts	Project Charter Project Plan Project Schedule/VBS Roles & Responsibilities Project Deliverables Config. Management Plan Quality Assurance Plan Project Procedures	Previously created PM deliverables Project Risk Definition Project Risk Log Project Issue Definition Project Issue Log Project Change Request Definition Project Change Request Log	Team Status Report Project Status Report Unit Test (UT) Authorization System Integration Test (SIT) Authorization User Acceptance Test (UAT) Authorization
Software Development	Entry Deliverables Business Case Project Charter Detailed Business Requirements	Entry Deliverables High Level Solution Design Reqmt's Traceability Log	Entry Deliverables Detailed Solution Design Programming Specifications Reqmt's Traceability Log	Entry Deliverables Unit Code (UT) Plan (UT) Evaluation Criteria Reqmt's Traceability Log
Software Testing	Exit Deliverables High Level Solution Design Reqmt's Traceability Log	Exit Deliverables Detailed Solution Design Programming Specifications Reqmt's Traceability Log	Exit Deliverables Unit Code Training & Support Plan Reqmt's Traceability Log	Exit Deliverables Unit Code (UT) Evaluation Criteria (UT) Defect Log Reqmt's Traceability Log
	Entry Deliverables Business Case Project Charter Detailed Business Reqmt's	Entry Deliverables High Level Solution Design Testing Strategy	Entry Deliverables Detailed Solution Design Programming Specifications Reqmt's Traceability Log	Entry Deliverables Unit Code (UT) Authorization (SIT) Plan (SIT) Evaluation Criteria
	Exit Deliverables Testing Strategy (UAT) Plan (UAT) Evaluation Criteria	Exit Deliverables (SIT) Plan (SIT) Evaluation Criteria	Exit Deliverables (UT) Plan (UT) Evaluation Criteria Reqmt's Traceability Log	Exit Deliverables (SIT) Defect Log (SIT) Authorization Reqmt's Traceability Log

IT Methodology - Agile

1st Iteration (Accounts Receivable)



QAlassist Integrated Methodology

	Initiate	Plan	Execute & Control	Closeout
Project Management	Business Case Detailed Business Req'ts	Project Charter Project Plan Project Schedule/VBS Roles & Responsibilities Project Deliverables Config. Management Plan Quality Assurance Plan Project Procedures	Previously created PM deliverables Project Risk Definition Project Risk Log Project Issue Definition Project Issue Log Project Change Request Definition Project Change Request Log	Team Status Report Project Status Report Unit Test (UT) Authorization System Integration Test (SIT) Authorization User Acceptance Test (UAT) Authorization
Software Development	Entry Deliverables Business Case Project Charter Detailed Business Requirements	Entry Deliverables High Level Solution Design Reqmt's Traceability Log	Entry Deliverables Detailed Solution Design Programming Specifications Reqmt's Traceability Log	Entry Deliverables Unit Code (UT) Plan (UT) Evaluation Criteria Reqmt's Traceability Log
Software Testing	Exit Deliverables High Level Solution Design Reqmt's Traceability Log	Exit Deliverables Detailed Solution Design Programming Specifications Reqmt's Traceability Log	Exit Deliverables Unit Code Training & Support Plan Reqmt's Traceability Log	Exit Deliverables Unit Code (UT) Evaluation Criteria (UT) Defect Log Reqmt's Traceability Log
	Entry Deliverables Business Case Project Charter Detailed Business Reqmt's	Entry Deliverables High Level Solution Design Testing Strategy	Entry Deliverables Detailed Solution Design Programming Specifications Reqmt's Traceability Log	Entry Deliverables Unit Code (UT) Authorization (SIT) Plan (SIT) Evaluation Criteria
	Exit Deliverables Testing Strategy (UAT) Plan (UAT) Evaluation Criteria	Exit Deliverables (SIT) Plan (SIT) Evaluation Criteria	Exit Deliverables (UT) Plan (UT) Evaluation Criteria Reqmt's Traceability Log	Exit Deliverables (SIT) Defect Log (SIT) Authorization Reqmt's Traceability Log

IT Methodology - Agile

1st Iteration (Accounts Receivable)



QAlassist Integrated Methodology

	Initiate	Plan	Execute & Control	Closeout	
Project Management	Business Case Detailed Business Req'ts	Project Charter Project Plan Project Schedule/WBS Roles & Responsibilities Project Deliverables Config. Management Plan Quality Assurance Plan Project Procedures	Previously created PM deliverables Project Risk Definition Project Risk Log Project Issue Definition Project Issue Log Project Change Request Definition Project Change Request Log	Team Status Report Project Status Report Unit Test (UT) Authorization System Integration Test (SIT) Authorization User Acceptance Test (UAT) Authorization	Project Closeout
	Systems Analysis	Design	Build	Test	Release
Software Development	Entry Deliverables Business Case Project Charter Detailed Business Requirements Exit Deliverables High Level Solution Design Reqmt's Traceability Log	Entry Deliverables High Level Solution Design Reqmt's Traceability Log Exit Deliverables Detailed Solution Design Programming Specifications Reqmt's Traceability Log	Entry Deliverables Detailed Solution Design Programming Specifications Reqmt's Traceability Log Exit Deliverables Unit Code Training & Support Plan Reqmt's Traceability Log	Entry Deliverables Unit Code (UT) Plan (UT) Evaluation Criteria Reqmt's Traceability Log Exit Deliverables Unit Code (UT) Evaluation Criteria (UT) Defect Log Reqmt's Traceability Log	Entry Deliverables Unit Code (UT) Defect Log Reqmt's Traceability Log Exit Deliverables Unit Code Reqmt's Traceability Log (UT) Authorization
Software Testing	Entry Deliverables Business Case Project Charter Detailed Business Reqmt's Exit Deliverables Testing Strategy (UAT) Plan (UAT) Evaluation Criteria	Entry Deliverables High Level Solution Design Testing Strategy Exit Deliverables (SIT) Plan (SIT) Evaluation Criteria	Entry Deliverables Detailed Solution Design Programming Specifications Reqmt's Traceability Log Exit Deliverables (UT) Plan (UT) Evaluation Criteria Reqmt's Traceability Log	Entry Deliverables Unit Code (UT) Authorization (SIT) Plan (SIT) Evaluation Criteria Exit Deliverables (SIT) Evaluation Criteria (SIT) Defect Log (SIT) Authorization Reqmt's Traceability Log	Entry Deliverables Unit Code (SIT) Authorization (UAT) Plan (UAT) Evaluation Criteria Exit Deliverables (UAT) Evaluation Criteria (UAT) Defect Log (UAT) Authorization Reqmt's Traceability Log

© QA Assist 2.1

IT Methodology - Agile

1st Iteration (Accounts Receivable)



QAlassist Integrated Methodology

	Initiate	Plan	Execute & Control	Closeout
Project Management	Business Case Detailed Business Req'ts	Project Charter Project Plan Project Schedule/VBS Roles & Responsibilities Project Deliverables Config. Management Plan Quality Assurance Plan Project Procedures	Previously created PM deliverables Project Risk Definition Project Risk Log Project Issue Definition Project Issue Log Project Change Request Definition Project Change Request Log	Team Status Report Project Status Report Unit Test (UT) Authorization System Integration Test (SIT) Authorization User Acceptance Test (UAT) Authorization
Software Development	Entry Deliverables Business Case Project Charter Detailed Business Requirements	Entry Deliverables High Level Solution Design Reqmt's Traceability Log	Entry Deliverables Detailed Solution Design Programming Specifications Reqmt's Traceability Log	Entry Deliverables Unit Code (UT) Evaluation Criteria Reqmt's Traceability Log
Software Testing	Exit Deliverables High Level Solution Design Reqmt's Traceability Log	Exit Deliverables Detailed Solution Design Programming Specifications Reqmt's Traceability Log	Exit Deliverables Unit Code Training & Support Plan Reqmt's Traceability Log	Exit Deliverables Unit Code (UT) Evaluation Criteria (UT) Defect Log Reqmt's Traceability Log
	Entry Deliverables Business Case Project Charter Detailed Business Reqmt's	Entry Deliverables High Level Solution Design Testing Strategy	Entry Deliverables Detailed Solution Design Programming Specifications Reqmt's Traceability Log	Entry Deliverables Unit Code (UT) Authorization (SIT) Plan (SIT) Evaluation Criteria
	Exit Deliverables Testing Strategy (UAT) Plan (UAT) Evaluation Criteria	Exit Deliverables (SIT) Plan (SIT) Evaluation Criteria	Exit Deliverables (UT) Plan (UT) Evaluation Criteria Reqmt's Traceability Log	Exit Deliverables (SIT) Defect Log (SIT) Authorization Reqmt's Traceability Log

Methodology/Lifecycle – Sample Project

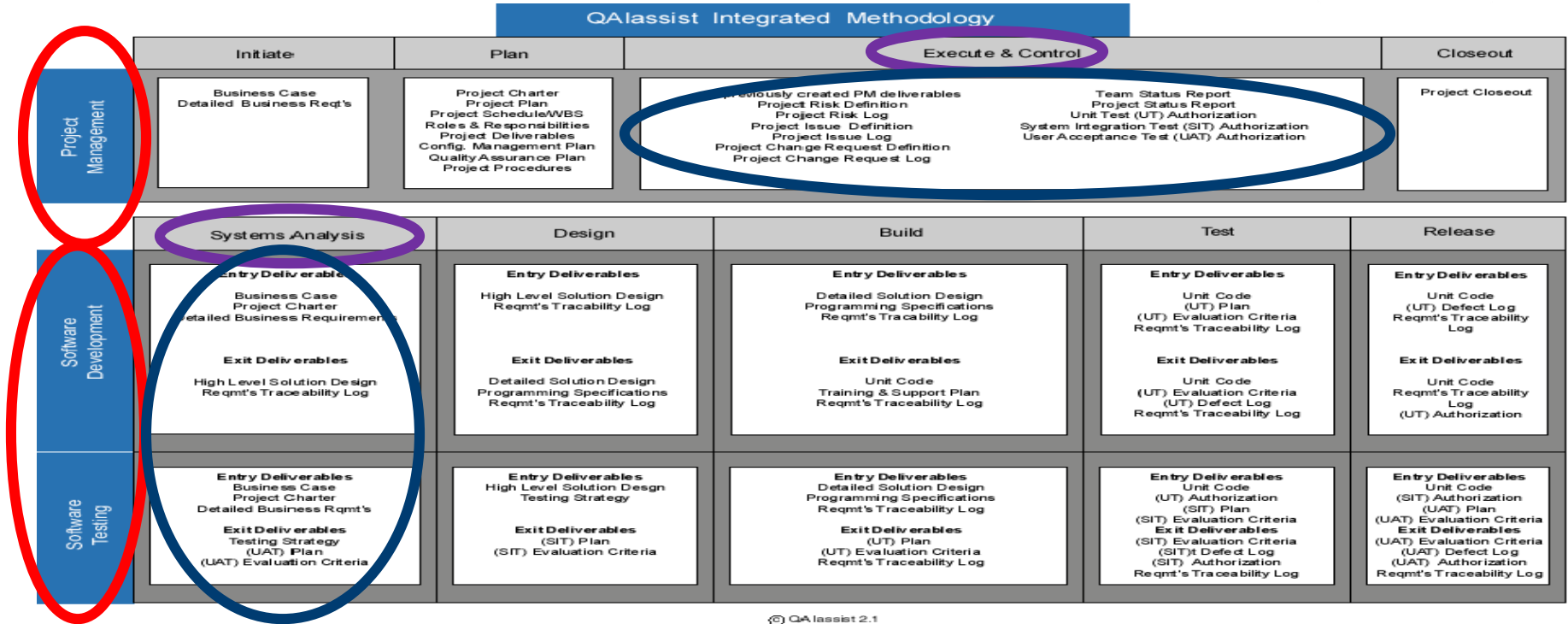


► Design. Build and Test an Accounting Application

- Functionality 1 Accounts Receivable
- **Functionality 2** **Accounts Payable**
- Functionality 3 Payroll

IT Methodology - Agile

2nd Iteration (Accounts Payable)



IT Methodology - Agile

2nd Iteration (Accounts Payable)



QAassist Integrated Methodology

	Initiate	Plan	Execute & Control		Closeout
Project Management	Business Case Detailed Business Req'ts	Project Charter Project Plan Project Schedule/VBS Roles & Responsibilities Project Deliverables Config. Management Plan Quality Assurance Plan Project Procedures	Previously created PM deliverables Project Risk Definition Project Risk Log Project Issue Definition Project Issue Log Project Change Request Definition Project Change Request Log		Team Status Report Project Status Report Unit Test (UT) Authorization System Integration Test (SIT) Authorization User Acceptance Test (UAT) Authorization Project Closeout
Software Development	Systems Analysis	Design	Build	Test	Release
Software Development	Entry Deliverables Business Case Project Charter Detailed Business Requirements	Entry Deliverables High Level Solution Design Reqmt's Traceability Log	Entry Deliverables Detailed Solution Design Programming Specifications Reqmt's Traceability Log	Entry Deliverables Unit Code (UT) Plan (UT) Evaluation Criteria Reqmt's Traceability Log	Entry Deliverables Unit Code (UT) Defect Log Reqmt's Traceability Log
	Exit Deliverables High Level Solution Design Reqmt's Traceability Log	Exit Deliverables Detailed Solution Design Programming Specifications Reqmt's Traceability Log	Exit Deliverables Unit Code Training & Support Plan Reqmt's Traceability Log	Exit Deliverables Unit Code (UT) Evaluation Criteria (UT) Defect Log Reqmt's Traceability Log	Exit Deliverables Unit Code Reqmt's Traceability Log (UT) Authorization
Software Testing	Entry Deliverables Business Case Project Charter Detailed Business Reqmt's	Entry Deliverables High Level Solution Design Testing Strategy	Entry Deliverables Detailed Solution Design Programming Specifications Reqmt's Traceability Log	Entry Deliverables Unit Code (UT) Authorization (SIT) Plan (SIT) Evaluation Criteria	Entry Deliverables Unit Code (SIT) Authorization (UAT) Plan (UAT) Evaluation Criteria
Software Testing	Exit Deliverables Testing Strategy (UAT) Plan (UAT) Evaluation Criteria	Exit Deliverables (SIT) Plan (SIT) Evaluation Criteria	Exit Deliverables (UT) Plan (UT) Evaluation Criteria Reqmt's Traceability Log	Exit Deliverables (SIT) Evaluation Criteria (SIT) Defect Log (SIT) Authorization Reqmt's Traceability Log	Exit Deliverables (UAT) Evaluation Criteria (UAT) Defect Log (UAT) Authorization Reqmt's Traceability Log

IT Methodology - Agile

2nd Iteration (Accounts Payable)



QAlassist Integrated Methodology

Cross-Cutting Integrated Methodology					
	Initiate	Plan	Execute & Control	Closeout	
Project Management	Business Case Detailed Business Req'ts	Project Charter Project Plan Project Schedule/WBS Roles & Responsibilities Project Deliverables Config. Management Plan Quality Assurance Plan Project Procedures	Previously created PM deliverables Project Risk Definition Project Risk Log Project Issue Definition Project Issue Log Project Change Request Definition Project Change Request Log	Team Status Report Project Status Report Unit Test (UT) Authorization System Integration Test (SIT) Authorization User Acceptance Test (UAT) Authorization	Project Closeout
	Systems Analysis	Design	Build	Test	Release
Software Development	Entry Deliverables Business Case Project Charter Detailed Business Requirements Exit Deliverables High Level Solution Design Reqmt's Traceability Log	Entry Deliverables High Level Solution Design Reqmt's Traceability Log Exit Deliverables Detailed Solution Design Programming Specifications Reqmt's Traceability Log	Entry Deliverables Detailed Solution Design Programming Specifications Reqmt's Traceability Log Exit Deliverables Unit Code Training & Support Plan Reqmt's Traceability Log	Entry Deliverables Unit Code (UT) Plan (UT) Evaluation Criteria Reqmt's Traceability Log Exit Deliverables Unit Code (UT) Evaluation Criteria (UT) Defect Log Reqmt's Traceability Log	Entry Deliverables Unit Code (UT) Defect Log Reqmt's Traceability Log Exit Deliverables Unit Code Reqmt's Traceability Log (UT) Authorization
Software Testing	Entry Deliverables Business Case Project Charter Detailed Business Reqmt's Exit Deliverables Testing Strategy (UAT) Plan (UAT) Evaluation Criteria	Entry Deliverables High Level Solution Design Testing Strategy Exit Deliverables (SIT) Plan (SIT) Evaluation Criteria	Entry Deliverables Detailed Solution Design Programming Specifications Reqmt's Traceability Log Exit Deliverables (UT) Plan (UT) Evaluation Criteria Reqmt's Traceability Log	Entry Deliverables Unit Code (UT) Authorization (SIT) Plan (SIT) Evaluation Criteria Exit Deliverables (SIT) Evaluation Criteria (SIT) Defect Log (SIT) Authorization Reqmt's Traceability Log	Entry Deliverables Unit Code (SIT) Authorization (UAT) Plan (UAT) Evaluation Criteria Exit Deliverables (UAT) Evaluation Criteria (UAT) Defect Log (UAT) Authorization Reqmt's Traceability Log

IT Methodology – Agile

2nd Iteration (Accounts Payable)



QAlassist Integrated Methodology

Software Development Life Cycle (SDLC) - Project Management & Development Phases					
Phase	Project Management		Development		Testing & Deployment
	Initiate	Plan	Execute & Control	Test	Release
Project Management	Business Case Detailed Business Req'ts	Project Charter Project Plan Project Schedule/WBS Roles & Responsibilities Project Deliverables Config. Management Plan Quality Assurance Plan Project Procedures	Previously created PM deliverables Project Risk Definition Project Risk Log Project Issue Definition Project Issue Log Project Change Request Definition Project Change Request Log	Team Status Report Project Status Report Unit Test (UT) Authorization System Integration Test (SIT) Authorization User Acceptance Test (UAT) Authorization	Project Closeout
Software Development	Systems Analysis	Design	Build	Test	Release
Software Development	Entry Deliverables Business Case Project Charter Detailed Business Requirements	Entry Deliverables High Level Solution Design Reqmt's Traceability Log	Entry Deliverables Detailed Solution Design Programming Specifications Reqmt's Traceability Log	Entry Deliverables Unit Code (UT) Plan (UT) Evaluation Criteria Reqmt's Traceability Log	Entry Deliverables Unit Code (UT) Defect Log Reqmt's Traceability Log
	Exit Deliverables High Level Solution Design Reqmt's Traceability Log	Exit Deliverables Detailed Solution Design Programming Specifications Reqmt's Traceability Log	Exit Deliverables Unit Code Training & Support Plan Reqmt's Traceability Log	Exit Deliverables Unit Code (UT) Evaluation Criteria (UT) Defect Log Reqmt's Traceability Log	Exit Deliverables Unit Code Reqmt's Traceability Log (UT) Authorization
Software Testing	Entry Deliverables Business Case Project Charter Detailed Business Reqmt's	Entry Deliverables High Level Solution Design Testing Strategy	Entry Deliverables Detailed Solution Design Programming Specifications Reqmt's Traceability Log	Entry Deliverables Unit Code (UT) Authorization (SIT) Plan (SIT) Evaluation Criteria Exit Deliverables (SIT) Evaluation Criteria (SIT) Defect Log (SIT) Authorization Reqmt's Traceability Log	Entry Deliverables Unit Code (SIT) Authorization (UAT) Plan (UAT) Evaluation Criteria Exit Deliverables (UAT) Evaluation Criteria (UAT) Defect Log (UAT) Authorization Reqmt's Traceability Log
Software Testing	Exit Deliverables Testing Strategy (UAT) Plan (UAT) Evaluation Criteria	Exit Deliverables (SIT) Plan (SIT) Evaluation Criteria	Exit Deliverables (UT) Plan (UT) Evaluation Criteria Reqmt's Traceability Log		

IT Methodology - Agile

2nd Iteration (Accounts Payable)



QAassist Integrated Methodology

	Initiate	Plan	Execute & Control		Closeout
Project Management	Business Case Detailed Business Req'ts	Project Charter Project Plan Project Schedule/WBS Roles & Responsibilities Project Deliverables Config. Management Plan Quality Assurance Plan Project Procedures	Previously created PM deliverables Project Risk Definition Project Risk Log Project Issue Definition Project Issue Log Project Change Request Definition Project Change Request Log		Team Status Report Project Status Report Unit Test (UT) Authorization System Integration Test (SIT) Authorization User Acceptance Test (UAT) Authorization Project Closeout
	Systems Analysis	Design	Build	Test	Release
Software Development	Entry Deliverables Business Case Project Charter Detailed Business Requirements Exit Deliverables High Level Solution Design Reqmt's Traceability Log	Entry Deliverables High Level Solution Design Reqmt's Tracability Log Exit Deliverables Detailed Solution Design Programming Specifications Reqmt's Traceability Log	Entry Deliverables Detailed Solution Design Programming Specifications Reqmt's Tracability Log Exit Deliverables Unit Code Training & Support Plan Reqmt's Traceability Log	Entry Deliverables Unit Code (UT) Plan (UT) Evaluation Criteria Reqmt's Traceability Log Exit Deliverables Unit Code (UT) Evaluation Criteria (UT) Defect Log Reqmt's Traceability Log	Entry Deliverables Unit Code (UT) Defect Log Reqmt's Traceability Log Exit Deliverables Unit Code Reqmt's Traceability Log (UT) Authorization
Software Testing	Entry Deliverables Business Case Project Charter Detailed Business Reqmt's Exit Deliverables Testing Strategy (UAT) Plan (UAT) Evaluation Criteria	Entry Deliverables High Level Solution Design Testing Strategy Exit Deliverables (SIT) Plan (SIT) Evaluation Criteria	Entry Deliverables Detailed Solution Design Programming Specifications Reqmt's Traceability Log Exit Deliverables (UT) Plan (UT) Evaluation Criteria Reqmt's Traceability Log	Entry Deliverables Unit Code (UT) Authorization (SIT) Plan (SIT) Evaluation Criteria Exit Deliverables (SIT) Evaluation Criteria (SIT) Defect Log (SIT) Authorization Reqmt's Traceability Log	Entry Deliverables Unit Code (SIT) Authorization (UAT) Plan (UAT) Evaluation Criteria Exit Deliverables (UAT) Evaluation Criteria (UAT) Defect Log (UAT) Authorization Reqmt's Traceability Log

Methodology/Lifecycle – Sample Project



► Design. Build and Test an Accounting Application

- Functionality 1 Accounts Receivable
- Functionality 2 Accounts Payable
- **Functionality 3** **Payroll**

IT Methodology - Agile

3rd Iteration (Payroll)



QAassist Integrated Methodology

	Initiate	Plan	Execute & Control	Closeout	
Project Management	Business Case Detailed Business Req'ts	Project Charter Project Plan Project Schedule/VBS Roles & Responsibilities Project Deliverables Config. Management Plan Quality Assurance Plan Project Procedures	Previously created PM deliverables Project Risk Definition Project Risk Log Project Issue Definition Project Issue Log Project Change Request Definition Project Change Request Log	Team Status Report Project Status Report Unit Test (UT) Authorization System Integration Test (SIT) Authorization User Acceptance Test (UAT) Authorization	Project Closeout
	Systems Analysis	Design	Build	Test	Release
Software Development	Entry Deliverable Business Case Project Charter Detailed Business Requirements	Entry Deliverables High Level Solution Design Reqmt's Traceability Log	Entry Deliverables Detailed Solution Design Programming Specifications Reqmt's Traceability Log	Entry Deliverables Unit Code (UT) Plan (UT) Evaluation Criteria Reqmt's Traceability Log	Entry Deliverables Unit Code (UT) Defect Log Reqmt's Traceability Log
	Exit Deliverables High Level Solution Design Reqmt's Traceability Log	Exit Deliverables Detailed Solution Design Programming Specifications Reqmt's Traceability Log	Exit Deliverables Unit Code Training & Support Plan Reqmt's Traceability Log	Exit Deliverables Unit Code (UT) Evaluation Criteria (UT) Defect Log Reqmt's Traceability Log	Exit Deliverables Unit Code Reqmt's Traceability Log (UT) Authorization
Software Testing	Entry Deliverables Business Case Project Charter Detailed Business Reqmt's	Entry Deliverables High Level Solution Design Testing Strategy	Entry Deliverables Detailed Solution Design Programming Specifications Reqmt's Traceability Log	Entry Deliverables Unit Code (UT) Authorization (SIT) Plan (SIT) Evaluation Criteria	Entry Deliverables Unit Code (SIT) Authorization (UAT) Plan (UAT) Evaluation Criteria
	Exit Deliverables Testing Strategy (UAT) Plan (UAT) Evaluation Criteria	Exit Deliverables (SIT) Plan (SIT) Evaluation Criteria	Exit Deliverables (UT) Plan (UT) Evaluation Criteria Reqmt's Traceability Log	Exit Deliverables (SIT) Evaluation Criteria (SIT) Defect Log (SIT) Authorization Reqmt's Traceability Log	Exit Deliverables (UAT) Evaluation Criteria (UAT) Defect Log (UAT) Authorization Reqmt's Traceability Log

IT Methodology - Agile

3rd Iteration (Payroll)



QAassist Integrated Methodology

	Initiate	Plan	Execute & Control	Closeout
Project Management	Business Case Detailed Business Req'ts	Project Charter Project Plan Project Schedule/VBS Roles & Responsibilities Project Deliverables Config. Management Plan Quality Assurance Plan Project Procedures	Previously created PM deliverables Project Risk Definition Project Risk Log Project Issue Definition Project Issue Log Project Change Request Definition Project Change Request Log	Team Status Report Project Status Report Unit Test (UT) Authorization System Integration Test (SIT) Authorization User Acceptance Test (UAT) Authorization
Software Development	Entry Deliverables Business Case Project Charter Detailed Business Requirements	Entry Deliverables High Level Solution Design Reqmt's Traceability Log	Entry Deliverables Detailed Solution Design Programming Specifications Reqmt's Traceability Log	Entry Deliverables Unit Code (UT) Plan (UT) Evaluation Criteria Reqmt's Traceability Log
Software Testing	Exit Deliverables High Level Solution Design Reqmt's Traceability Log	Exit Deliverables Detailed Solution Design Programming Specifications Reqmt's Traceability Log	Exit Deliverables Unit Code Training & Support Plan Reqmt's Traceability Log	Exit Deliverables Unit Code (UT) Evaluation Criteria (UT) Defect Log Reqmt's Traceability Log
	Entry Deliverables Business Case Project Charter Detailed Business Reqmt's	Entry Deliverables High Level Solution Design Testing Strategy	Entry Deliverables Detailed Solution Design Programming Specifications Reqmt's Traceability Log	Entry Deliverables Unit Code (UT) Authorization (SIT) Plan (SIT) Evaluation Criteria
	Exit Deliverables Testing Strategy (UAT) Plan (UAT) Evaluation Criteria	Exit Deliverables (SIT) Plan (SIT) Evaluation Criteria	Exit Deliverables (UT) Plan (UT) Evaluation Criteria Reqmt's Traceability Log	Exit Deliverables (SIT) Defect Log (SIT) Authorization Reqmt's Traceability Log
				Entry Deliverables Unit Code (SIT) Authorization (UAT) Plan (UAT) Evaluation Criteria
				Exit Deliverables (UAT) Evaluation Criteria (UAT) Defect Log (UAT) Authorization Reqmt's Traceability Log

IT Methodology - Agile

3rd Iteration (Payroll)



QAassist Integrated Methodology

	Initiate	Plan	Execute & Control	Closeout
Project Management	Business Case Detailed Business Req'ts	Project Charter Project Plan Project Schedule/VBS Roles & Responsibilities Project Deliverables Config. Management Plan Quality Assurance Plan Project Procedures	Previously created PM deliverables Project Risk Definition Project Risk Log Project Issue Definition Project Issue Log Project Change Request Definition Project Change Request Log	Team Status Report Project Status Report Unit Test (UT) Authorization System Integration Test (SIT) Authorization User Acceptance Test (UAT) Authorization
Software Development	Entry Deliverables Business Case Project Charter Detailed Business Requirements	Entry Deliverables High Level Solution Design Reqmt's Traceability Log	Entry Deliverables Detailed Solution Design Programming Specifications Reqmt's Traceability Log	Entry Deliverables Unit Code (UT) Plan (UT) Evaluation Criteria Reqmt's Traceability Log
Software Testing	Exit Deliverables High Level Solution Design Reqmt's Traceability Log	Exit Deliverables Detailed Solution Design Programming Specifications Reqmt's Traceability Log	Exit Deliverables Unit Code Training & Support Plan Reqmt's Traceability Log	Exit Deliverables Unit Code (UT) Evaluation Criteria (UT) Defect Log Reqmt's Traceability Log
	Entry Deliverables Business Case Project Charter Detailed Business Reqmt's	Entry Deliverables High Level Solution Design Testing Strategy	Entry Deliverables Detailed Solution Design Programming Specifications Reqmt's Traceability Log	Entry Deliverables Unit Code (UT) Authorization (SIT) Plan (SIT) Evaluation Criteria
	Exit Deliverables Testing Strategy (UAT) Plan (UAT) Evaluation Criteria	Exit Deliverables (SIT) Plan (SIT) Evaluation Criteria	Exit Deliverables (UT) Plan (UT) Evaluation Criteria Reqmt's Traceability Log	Exit Deliverables (SIT) Defect Log (SIT) Authorization Reqmt's Traceability Log

IT Methodology – Agile

3rd Iteration (Payroll)



QAlassist Integrated Methodology

	Initiate	Plan	Execute & Control		Closeout	
Project Management	Business Case Detailed Business Req'ts	Project Charter Project Plan Project Schedule/WBS Roles & Responsibilities Project Deliverables Config. Management Plan Quality Assurance Plan Project Procedures	Previously created PM deliverables Project Risk Definition Project Risk Log Project Issue Definition Project Issue Log Project Change Request Definition Project Change Request Log		Team Status Report Project Status Report Unit Test (UT) Authorization System Integration Test (SIT) Authorization User Acceptance Test (UAT) Authorization	Project Closeout
	Systems Analysis	Design	Build	Test	Release	
Software Development	Entry Deliverables Business Case Project Charter Detailed Business Requirements Exit Deliverables High Level Solution Design Reqmt's Traceability Log	Entry Deliverables High Level Solution Design Reqmt's Tracability Log Exit Deliverables Detailed Solution Design Programming Specifications Reqmt's Traceability Log	Entry Deliverables Detailed Solution Design Programming Specifications Reqmt's Tracability Log Exit Deliverables Unit Code Training & Support Plan Reqmt's Traceability Log	Entry Deliverables Unit Code (UT) Plan (UT) Evaluation Criteria Reqmt's Traceability Log Exit Deliverables Unit Code (UT) Evaluation Criteria (UT) Defect Log Reqmt's Traceability Log	Entry Deliverables Unit Code (UT) Defect Log Reqmt's Traceability Log Exit Deliverables Unit Code Reqmt's Traceability Log (UT) Authorization	
Software Testing	Entry Deliverables Business Case Project Charter Detailed Business Reqmt's Exit Deliverables Testing Strategy (UAT) Plan (UAT) Evaluation Criteria	Entry Deliverables High Level Solution Design Testing Strategy Exit Deliverables (SIT) Plan (SIT) Evaluation Criteria	Entry Deliverables Detailed Solution Design Programming Specifications Reqmt's Traceability Log Exit Deliverables (UT) Plan (UT) Evaluation Criteria Reqmt's Traceability Log	Entry Deliverables Unit Code (UT) Authorization (SIT) Plan (SIT) Evaluation Criteria Exit Deliverables (SIT) Evaluation Criteria (SIT) Defect Log (SIT) Authorization Reqmt's Traceability Log	Entry Deliverables Unit Code (SIT) Authorization (UAT) Plan (UAT) Evaluation Criteria Exit Deliverables (UAT) Evaluation Criteria (UAT) Defect Log (UAT) Authorization Reqmt's Traceability Log	

IT Methodology - Agile

3rd Iteration (Payroll)



QAlassist Integrated Methodology

	Initiate	Plan	Execute & Control	Closeout	
Project Management	Business Case Detailed Business Req'ts	Project Charter Project Plan Project Schedule/WBS Roles & Responsibilities Project Deliverables Config. Management Plan Quality Assurance Plan Project Procedures	Previously created PM deliverables Project Risk Definition Project Risk Log Project Issue Definition Project Issue Log Project Change Request Definition Project Change Request Log	Team Status Report Project Status Report Unit Test (UT) Authorization System Integration Test (SIT) Authorization User Acceptance Test (UAT) Authorization	Project Closeout
	Systems Analysis	Design	Build	Test	Release
Software Development	Entry Deliverables Business Case Project Charter Detailed Business Requirements Exit Deliverables High Level Solution Design Reqmt's Traceability Log	Entry Deliverables High Level Solution Design Reqmt's Traceability Log Exit Deliverables Detailed Solution Design Programming Specifications Reqmt's Traceability Log	Entry Deliverables Detailed Solution Design Programming Specifications Reqmt's Traceability Log Exit Deliverables Unit Code Training & Support Plan Reqmt's Traceability Log	Entry Deliverables Unit Code (UT) Plan (UT) Evaluation Criteria Reqmt's Traceability Log Exit Deliverables Unit Code (UT) Evaluation Criteria (UT) Defect Log Reqmt's Traceability Log	Entry Deliverables Unit Code (UT) Defect Log Reqmt's Traceability Log Exit Deliverables Unit Code Reqmt's Traceability Log (UT) Authorization
Software Testing	Entry Deliverables Business Case Project Charter Detailed Business Reqmt's Exit Deliverables Testing Strategy (UAT) Plan (UAT) Evaluation Criteria	Entry Deliverables High Level Solution Design Testing Strategy Exit Deliverables (SIT) Plan (SIT) Evaluation Criteria	Entry Deliverables Detailed Solution Design Programming Specifications Reqmt's Traceability Log Exit Deliverables (UT) Plan (UT) Evaluation Criteria Reqmt's Traceability Log	Entry Deliverables Unit Code (UT) Authorization (SIT) Plan (SIT) Evaluation Criteria Exit Deliverables (SIT) Evaluation Criteria (SIT) Defect Log (SIT) Authorization Reqmt's Traceability Log	Entry Deliverables Unit Code (SIT) Authorization (UAT) Plan (UAT) Evaluation Criteria Exit Deliverables (UAT) Evaluation Criteria (UAT) Defect Log (UAT) Authorization Reqmt's Traceability Log

QA Assist 2.1

Methodology/Lifecycle – Sample Project



► Design. Build and Test an Accounting Application

- | | | |
|-------------------|---------------------|---------------------------------|
| ▪ Functionality 1 | Accounts Receivable | 1st Iteration |
| ▪ Functionality 2 | Accounts Payable | 2nd Iteration |
| ▪ Functionality 3 | Payroll | 3rd Iteration |

QAlassist Integrated Methodology



QAlassist Integrated Methodology

	Initiate	Plan	Execute & Control		Closeout
Project Management	Business Case Detailed Business Req'ts	Project Charter Project Plan Project Schedule/VBS Roles & Responsibilities Project Deliverables Config. Management Plan Quality Assurance Plan Project Procedures	All previously created PM deliverables Project Risk Definition Project Risk Log Project Issue Definition Project Issue Log Project Change Request Definition Project Change Request Log		Team Status Report Project Status Report Unit Test (UT) Authorization System Integration Test (SIT) Authorization User Acceptance Test (UAT) Authorization Project Closeout
	Systems Analysis	Design	Build	Test	Release
Software Development	Entry Deliverables Business Case Project Charter Detailed Business Requirements Exit Deliverables High Level Solution Design Reqmt's Traceability Log	Entry Deliverables High Level Solution Design Reqmt's Traceability Log Exit Deliverables Detailed Solution Design Programming Specifications Reqmt's Traceability Log	Entry Deliverables Detailed Solution Design Programming Specifications Reqmt's Traceability Log Exit Deliverables Unit Code Training & Support Plan Reqmt's Traceability Log	Entry Deliverables Unit Code (UT) Plan (UT) Evaluation Criteria Reqmt's Traceability Log Exit Deliverables Unit Code (UT) Evaluation Criteria (UT) Defect Log Reqmt's Traceability Log	Entry Deliverables Unit Code (UT) Defect Log Reqmt's Traceability Log Exit Deliverables Unit Code Reqmt's Traceability Log (UT) Authorization
Software Testing	Entry Deliverables Business Case Project Charter Detailed Business Reqmt's Exit Deliverables Testing Strategy (UAT) Plan (UAT) Evaluation Criteria	Entry Deliverables High Level Solution Design Testing Strategy Exit Deliverables (SIT) Plan (SIT) Evaluation Criteria	Entry Deliverables Detailed Solution Design Programming Specifications Reqmt's Traceability Log Exit Deliverables (UT) Plan (UT) Evaluation Criteria Reqmt's Traceability Log	Entry Deliverables Unit Code (UT) Authorization (SIT) Plan (SIT) Evaluation Criteria Exit Deliverables (SIT) Evaluation Criteria (SIT) Defect Log (SIT) Authorization Reqmt's Traceability Log	Entry Deliverables Unit Code (SIT) Authorization (UAT) Plan (UAT) Evaluation Criteria Exit Deliverables (UAT) Evaluation Criteria (UAT) Defect Log (UAT) Authorization Reqmt's Traceability Log



● Which of the following IT methodologies (verb) would deliver the greatest benefit ?

- (a) Agile
- (b) Prototyping
- (c) RAD
- (d) Waterfall
- (e) it depends

A Context for IT Methodology

Concepts I – Agenda



- ▶ IT Methodology - general context
- ▶ IT Methodology - as a “noun” and a “verb”
- ▶ IT Methodology constructs and hierarchy - “noun” (lifecycles, phases, deliverables)
- ▶ **IT Methodology - “verb” (waterfall, agile, spiral, RAD)**
- ▶ IT Methodology structure & deliverable examples - “noun” (project management, software development, software testing)
- ▶ IT Methodology - organizational compatibility and benefits
- ▶ Recap

A Context for IT Methodology

Concepts I – Agenda



- ▶ IT Methodology - general context
- ▶ IT Methodology - as a “noun” and a “verb”
- ▶ IT Methodology constructs and hierarchy - “noun” (lifecycles, phases, deliverables)
- ▶ IT Methodology - “verb” (waterfall, agile, spiral, RAD)
- ▶ **IT Methodology structure & deliverable examples - “noun” (project management, software development, software testing)**
- ▶ IT Methodology - organizational compatibility and benefits
- ▶ Recap

“Deliverable/Artifact/Work Product” versus “Activity”



Building an IT Application

► Deliverable (Artifact, Work Product)

- Business Case
- Project Plan
- User Acceptance Test Plan

► Activity (non-Deliverable, non-Artifact, non Work Product)

- Reviewing business need with Operational Management, Business Analysts and End-Users
- Meeting with Stakeholders to acquire approval of Project Plan
- Discussing User Acceptance Testing objectives and priorities with testing team

“Deliverable/Artifact/Work Product” Construct/Format - see example



- ▶ Fixed Sections (always populated)
 - Title Page
 - Deliverable Details (Author, Creation Date, Version, Status, etc)
 - Deliverable History, Reviewers, Sign Off
 - Table of Contents (as per deliverable)
 - Context (purpose of the deliverable)
- ▶ Variable Sections (based on pre-defined informational requirements)
 - Structure/format defined as per deliverable (ie a Project Charter deliverable does not have the same pre-defined informational requirements as a Testing Strategy deliverable)

QAlassist Integrated Methodology



QAlassist Integrated Methodology

	Initiate	Plan	Execute & Control		Closeout
Project Management	Business Case Detailed Business Req'ts	Project Charter Project Plan Project Schedule/VBS Roles & Responsibilities Project Deliverables Config. Management Plan Quality Assurance Plan Project Procedures	All previously created PM deliverables Project Risk Definition Project Risk Log Project Issue Definition Project Issue Log Project Change Request Definition Project Change Request Log		Project Closeout Team Status Report Project Status Report Unit Test (UT) Authorization System Integration Test (SIT) Authorization User Acceptance Test (UAT) Authorization
	Systems Analysis	Design	Build	Test	Release
Software Development	Entry Deliverables Business Case Project Charter Detailed Business Requirements Exit Deliverables High Level Solution Design Reqmt's Traceability Log	Entry Deliverables High Level Solution Design Reqmt's Traceability Log Exit Deliverables Detailed Solution Design Programming Specifications Reqmt's Traceability Log	Entry Deliverables Detailed Solution Design Programming Specifications Reqmt's Traceability Log Exit Deliverables Unit Code Training & Support Plan Reqmt's Traceability Log	Entry Deliverables Unit Code (UT) Plan (UT) Evaluation Criteria Reqmt's Traceability Log Exit Deliverables Unit Code (UT) Evaluation Criteria (UT) Defect Log Reqmt's Traceability Log	Entry Deliverables Unit Code (UT) Defect Log Reqmt's Traceability Log Exit Deliverables Unit Code Reqmt's Traceability Log (UT) Authorization
Software Testing	Entry Deliverables Business Case Project Charter Detailed Business Reqmt's Exit Deliverables Testing Strategy (UAT) Plan (UAT) Evaluation Criteria	Entry Deliverables High Level Solution Design Testing Strategy Exit Deliverables (SIT) Plan (SIT) Evaluation Criteria	Entry Deliverables Detailed Solution Design Programming Specifications Reqmt's Traceability Log Exit Deliverables (UT) Plan (UT) Evaluation Criteria Reqmt's Traceability Log	Entry Deliverables Unit Code (UT) Authorization (SIT) Plan (SIT) Evaluation Criteria Exit Deliverables (SIT) Evaluation Criteria (SIT) Defect Log (SIT) Authorization Reqmt's Traceability Log	Entry Deliverables Unit Code (SIT) Authorization (UAT) Plan (UAT) Evaluation Criteria Exit Deliverables (UAT) Evaluation Criteria (UAT) Defect Log (UAT) Authorization Reqmt's Traceability Log

QAlassist Integrated Methodology



QAlassist Integrated Methodology

	Initiate	Plan	Execute & Control		Closeout
Project Management	Business Case Detailed Business Req'ts	Project Charter Project Plan Project Schedule/VBS Roles & Responsibilities Project Deliverables Config. Management Plan Quality Assurance Plan Project Procedures	All previously created PM deliverables Project Risk Definition Project Risk Log Project Issue Definition Project Issue Log Project Change Request Definition Project Change Request Log		Team Status Report Project Status Report Unit Test (UT) Authorization System Integration Test (SIT) Authorization User Acceptance Test (UAT) Authorization
	Systems Analysis	Design	Build	Test	Release
Software Development	Entry Deliverables Business Case Project Charter Detailed Business Requirements Exit Deliverables High Level Solution Design Reqmt's Traceability Log	Entry Deliverables High Level Solution Design Reqmt's Traceability Log Exit Deliverables Detailed Solution Design Programming Specifications Reqmt's Traceability Log	Entry Deliverables Detailed Solution Design Programming Specifications Reqmt's Traceability Log Exit Deliverables Unit Code Training & Support Plan Reqmt's Traceability Log	Entry Deliverables Unit Code (UT) Plan (UT) Evaluation Criteria Reqmt's Traceability Log Exit Deliverables Unit Code (UT) Evaluation Criteria (UT) Defect Log Reqmt's Traceability Log	Entry Deliverables Unit Code (UT) Defect Log Reqmt's Traceability Log Exit Deliverables Unit Code Reqmt's Traceability Log (UT) Authorization
Software Testing	Entry Deliverables Business Case Project Charter Detailed Business Reqmt's Exit Deliverables Testing Strategy (UAT) Plan (UAT) Evaluation Criteria	Entry Deliverables High Level Solution Design Testing Strategy Exit Deliverables (SIT) Plan (SIT) Evaluation Criteria	Entry Deliverables Detailed Solution Design Programming Specifications Reqmt's Traceability Log Exit Deliverables (UT) Plan (UT) Evaluation Criteria Reqmt's Traceability Log	Entry Deliverables Unit Code (UT) Authorization (SIT) Plan (SIT) Evaluation Criteria Exit Deliverables (SIT) Evaluation Criteria (SIT) Defect Log (SIT) Authorization Reqmt's Traceability Log	Entry Deliverables Unit Code (SIT) Authorization (UAT) Plan (UAT) Evaluation Criteria Exit Deliverables (UAT) Evaluation Criteria (UAT) Defect Log (UAT) Authorization Reqmt's Traceability Log



- The Project Management(PM) methodology/lifecycle focuses on initiating, planning and delivering a business solution. Phases include:
 - Initiate
 - Planning
 - Executing & Controlling
 - Closeout

QAlassist Integrated Methodology



QAlassist Integrated Methodology

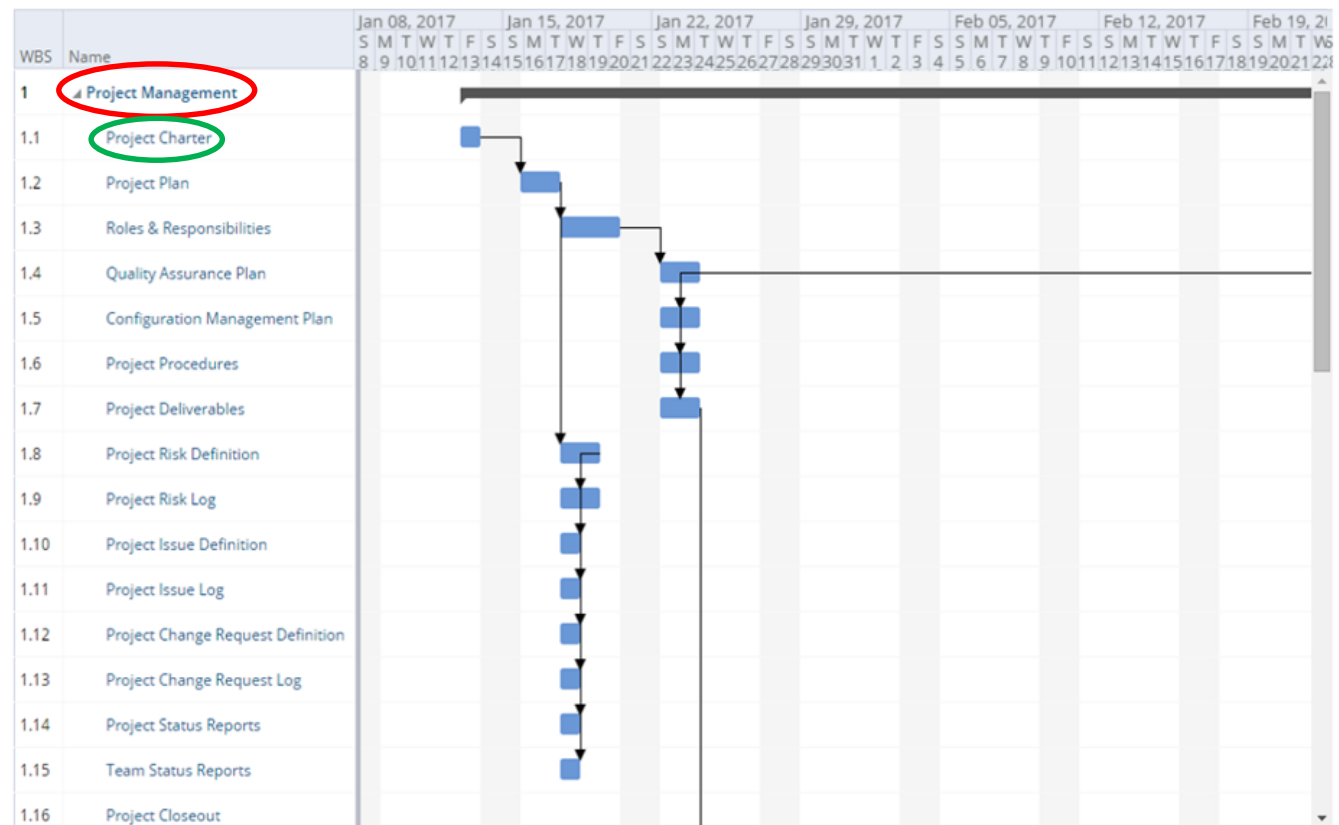
	Initiate	Plan	Execute & Control		Closeout
Project Management	Business Case Detailed Business Req'ts	Project Charter Project Plan Project Schedule/VBS Roles & Responsibilities Project Deliverables Config. Management Plan Quality Assurance Plan Project Procedures	All previously created PM deliverables Project Risk Definition Project Risk Log Project Issue Definition Project Issue Log Project Change Request Definition Project Change Request Log		Project Closeout
	Systems Analysis	Design	Build	Test	Release
Software Development	Entry Deliverables Business Case Project Charter Detailed Business Requirements Exit Deliverables High Level Solution Design Reqmt's Traceability Log	Entry Deliverables High Level Solution Design Reqmt's Traceability Log Exit Deliverables Detailed Solution Design Programming Specifications Reqmt's Traceability Log	Entry Deliverables Detailed Solution Design Programming Specifications Reqmt's Traceability Log Exit Deliverables Unit Code Training & Support Plan Reqmt's Traceability Log	Entry Deliverables Unit Code (UT) Plan (UT) Evaluation Criteria Reqmt's Traceability Log Exit Deliverables Unit Code (UT) Evaluation Criteria (UT) Defect Log Reqmt's Traceability Log	Entry Deliverables Unit Code (UT) Defect Log Reqmt's Traceability Log Exit Deliverables Unit Code Reqmt's Traceability Log (UT) Authorization
Software Testing	Entry Deliverables Business Case Project Charter Detailed Business Reqmt's Exit Deliverables Testing Strategy (UAT) Plan (UAT) Evaluation Criteria	Entry Deliverables High Level Solution Design Testing Strategy Exit Deliverables (SIT) Plan (SIT) Evaluation Criteria	Entry Deliverables Detailed Solution Design Programming Specifications Reqmt's Traceability Log Exit Deliverables (UT) Plan (UT) Evaluation Criteria Reqmt's Traceability Log	Entry Deliverables Unit Code (UT) Authorization (SIT) Plan (SIT) Evaluation Criteria Exit Deliverables (SIT) Evaluation Criteria (SIT) Defect Log (SIT) Authorization Reqmt's Traceability Log	Entry Deliverables Unit Code (SIT) Authorization (UAT) Plan (UAT) Evaluation Criteria Exit Deliverables (UAT) Evaluation Criteria (UAT) Defect Log (UAT) Authorization Reqmt's Traceability Log

QAlassist Integrated Methodology



QAlassist Integrated Methodology

	QAlassist Integrated Methodology				
	Initiate	Plan	Execute & Control		Closeout
Project Management	Business Case Detailed Business Req'ts	Project Charter Project Plan Project Schedule/VBS Roles & Responsibilities Project Deliverables Config. Management Plan Quality Assurance Plan Project Procedures	All previously created PM deliverables Project Risk Definition Project Risk Log Project Issue Definition Project Issue Log Project Change Request Definition Project Change Request Log		Team Status Report Project Status Report Unit Test (UT) Authorization System Integration Test (SIT) Authorization User Acceptance Test (UAT) Authorization Project Closeout
Software Development	Systems Analysis	Design	Build	Test	Release
	Entry Deliverables Business Case Project Charter Detailed Business Requirements Exit Deliverables High Level Solution Design Reqmt's Traceability Log	Entry Deliverables High Level Solution Design Reqmt's Traceability Log Exit Deliverables Detailed Solution Design Programming Specifications Reqmt's Traceability Log	Entry Deliverables Detailed Solution Design Programming Specifications Reqmt's Traceability Log Exit Deliverables Unit Code Training & Support Plan Reqmt's Traceability Log	Entry Deliverables Unit Code (UT) Plan (UT) Evaluation Criteria Reqmt's Traceability Log Exit Deliverables Unit Code (UT) Evaluation Criteria (UT) Defect Log Reqmt's Traceability Log	Entry Deliverables Unit Code (UT) Defect Log Reqmt's Traceability Log Exit Deliverables Unit Code Reqmt's Traceability Log (UT) Authorization
Software Testing	Entry Deliverables Business Case Project Charter Detailed Business Reqmt's Exit Deliverables Testing Strategy (UAT) Plan (UAT) Evaluation Criteria	Entry Deliverables High Level Solution Design Testing Strategy Exit Deliverables (SIT) Plan (SIT) Evaluation Criteria	Entry Deliverables Detailed Solution Design Programming Specifications Reqmt's Traceability Log Exit Deliverables (UT) Plan (UT) Evaluation Criteria Reqmt's Traceability Log	Entry Deliverables Unit Code (UT) Authorization (SIT) Plan (SIT) Evaluation Criteria Exit Deliverables (SIT) Evaluation Criteria (SIT) Defect Log (SIT) Authorization Reqmt's Traceability Log	Entry Deliverables Unit Code (SIT) Authorization (UAT) Plan (UAT) Evaluation Criteria Exit Deliverables (UAT) Evaluation Criteria (UAT) Defect Log (UAT) Authorization Reqmt's Traceability Log





- ▶ **Project Management** (lifecycle)

- ▶ **Plan** (phase name)

- ▶ **Project Charter** deliverable is used to identify and initiate a project. It establishes a starting point (goal posts) for a project and evolves with the project through implementation. It establishes a high level definition for a project – informational requirements may include

- Purpose
- Scope
- Budget
- Team Structure
- Risks & Issues

QAlassist Integrated Methodology



QAlassist Integrated Methodology

	Initiate	Plan	Execute & Control		Closeout
Project Management	Business Case Detailed Business Req'ts	Project Charter Project Plan Project Schedule/VBS Roles & Responsibilities Project Deliverables Config. Management Plan Quality Assurance Plan Project Procedures	All previously created PM deliverables Project Risk Definition Project Risk Log Project Issue Definition Project Issue Log Project Change Request Definition Project Change Request Log		Project Closeout
	Systems Analysis	Design	Build	Test	Release
Software Development	Entry Deliverables Business Case Project Charter Detailed Business Requirements Exit Deliverables High Level Solution Design Reqmt's Traceability Log	Entry Deliverables High Level Solution Design Reqmt's Traceability Log Exit Deliverables Detailed Solution Design Programming Specifications Reqmt's Traceability Log	Entry Deliverables Detailed Solution Design Programming Specifications Reqmt's Traceability Log Exit Deliverables Unit Code Training & Support Plan Reqmt's Traceability Log	Entry Deliverables Unit Code (UT) Plan (UT) Evaluation Criteria Reqmt's Traceability Log Exit Deliverables Unit Code (UT) Evaluation Criteria (UT) Defect Log Reqmt's Traceability Log	Entry Deliverables Unit Code (UT) Defect Log Reqmt's Traceability Log Exit Deliverables Unit Code Reqmt's Traceability Log (UT) Authorization
Software Testing	Entry Deliverables Business Case Project Charter Detailed Business Reqmt's Exit Deliverables Testing Strategy (UAT) Plan (UAT) Evaluation Criteria	Entry Deliverables High Level Solution Design Testing Strategy Exit Deliverables (SIT) Plan (SIT) Evaluation Criteria	Entry Deliverables Detailed Solution Design Programming Specifications Reqmt's Traceability Log Exit Deliverables (UT) Plan (UT) Evaluation Criteria Reqmt's Traceability Log	Entry Deliverables Unit Code (UT) Authorization (SIT) Plan (SIT) Evaluation Criteria Exit Deliverables (SIT) Evaluation Criteria (SIT) Defect Log (SIT) Authorization Reqmt's Traceability Log	Entry Deliverables Unit Code (SIT) Authorization (UAT) Plan (UAT) Evaluation Criteria Exit Deliverables (UAT) Evaluation Criteria (UAT) Defect Log (UAT) Authorization Reqmt's Traceability Log

QAlassist Integrated Methodology



QAlassist Integrated Methodology

	Initiate	Plan	Execute & Control		Closeout
Project Management	Business Case Detailed Business Req'ts	Project Charter Project Plan Project Schedule/VBS Roles & Responsibilities Project Deliverables Config. Management Plan Quality Assurance Plan Project Procedures	All previously created PM deliverables Project Risk Definition Project Risk Log Project Issue Definition Project Issue Log Project Change Request Definition Project Change Request Log		Project Closeout
	Systems Analysis	Design	Build	Test	Release
Software Development	Entry Deliverables Business Case Project Charter Detailed Business Requirements Exit Deliverables High Level Solution Design Reqmt's Traceability Log	Entry Deliverables High Level Solution Design Reqmt's Traceability Log Exit Deliverables Detailed Solution Design Programming Specifications Reqmt's Traceability Log	Entry Deliverables Detailed Solution Design Programming Specifications Reqmt's Traceability Log Exit Deliverables Unit Code Training & Support Plan Reqmt's Traceability Log	Entry Deliverables Unit Code (UT) Plan (UT) Evaluation Criteria Reqmt's Traceability Log Exit Deliverables Unit Code (UT) Evaluation Criteria (UT) Defect Log Reqmt's Traceability Log	Entry Deliverables Unit Code (UT) Defect Log Reqmt's Traceability Log Exit Deliverables Unit Code Reqmt's Traceability Log (UT) Authorization
Software Testing	Entry Deliverables Business Case Project Charter Detailed Business Reqmt's Exit Deliverables Testing Strategy (UAT) Plan (UAT) Evaluation Criteria	Entry Deliverables High Level Solution Design Testing Strategy Exit Deliverables (SIT) Plan (SIT) Evaluation Criteria	Entry Deliverables Detailed Solution Design Programming Specifications Reqmt's Traceability Log Exit Deliverables (UT) Plan (UT) Evaluation Criteria Reqmt's Traceability Log	Entry Deliverables Unit Code (UT) Authorization (SIT) Plan (SIT) Evaluation Criteria Exit Deliverables (SIT) Evaluation Criteria (SIT) Defect Log (SIT) Authorization Reqmt's Traceability Log	Entry Deliverables Unit Code (SIT) Authorization (UAT) Plan (UAT) Evaluation Criteria Exit Deliverables (UAT) Evaluation Criteria (UAT) Defect Log (UAT) Authorization Reqmt's Traceability Log



- The Software Development (SDLC) methodology/lifecycle focuses on defining, designing, building, unit testing and delivering a business solution. Phases include

- System Analysis
- Design
- Build
- Test
- Release

QAlassist Integrated Methodology



QAlassist Integrated Methodology

	Initiate	Plan	Execute & Control		Closeout
Project Management	Business Case Detailed Business Req'ts	Project Charter Project Plan Project Schedule/WBS Roles & Responsibilities Project Deliverables Config. Management Plan Quality Assurance Plan Project Procedures	All previously created PM deliverables Project Risk Definition Project Risk Log Project Issue Definition Project Issue Log Project Change Request Definition Project Change Request Log		Team Status Report Project Status Report Unit Test (UT) Authorization System Integration Test (SIT) Authorization User Acceptance Test (UAT) Authorization Project Closeout
Software Development	Systems Analysis	Design	Build	Test	Release
	Entry Deliverables Business Case Project Charter Detailed Business Requirements Exit Deliverables High Level Solution Design Reqmt's Traceability Log	Entry Deliverables High Level Solution Design Reqmt's Tracability Log Exit Deliverables Detailed Solution Design Programming Specifications Reqmt's Traceability Log	Entry Deliverables Detailed Solution Design Programming Specifications Reqmt's Tracability Log Exit Deliverables Unit Code Training & Support Plan Reqmt's Traceability Log	Entry Deliverables Unit Code (UT) Plan (UT) Evaluation Criteria Reqmt's Traceability Log Exit Deliverables Unit Code (UT) Evaluation Criteria (UT) Defect Log Reqmt's Traceability Log	Entry Deliverables Unit Code (UT) Defect Log Reqmt's Traceability Log Exit Deliverables Unit Code Reqmt's Traceability Log (UT) Authorization
	Entry Deliverables Business Case Project Charter Detailed Business Reqmt's Exit Deliverables Testing Strategy (SIT) Plan (UAT) Evaluation Criteria	Entry Deliverables High Level Solution Design Testing Strategy Exit Deliverables (SIT) Plan (SIT) Evaluation Criteria	Entry Deliverables Detailed Solution Design Programming Specifications Reqmt's Traceability Log Exit Deliverables (UT) Plan (UT) Evaluation Criteria Reqmt's Traceability Log	Entry Deliverables Unit Code (UT) Authorization (SIT) Plan (SIT) Evaluation Criteria Exit Deliverables (SIT) Evaluation Criteria (SIT) Defect Log (SIT) Authorization Reqmt's Traceability Log	Entry Deliverables Unit Code (SIT) Authorization (UAT) Plan (UAT) Evaluation Criteria Exit Deliverables (UAT) Evaluation Criteria (UAT) Defect Log (UAT) Authorization Reqmt's Traceability Log

QAlassist Integrated Methodology



QAlassist Integrated Methodology

	Initiate	Plan	Execute & Control		Closeout
Project Management	Business Case Detailed Business Req'ts	Project Charter Project Plan Project Schedule/VBS Roles & Responsibilities Project Deliverables Config. Management Plan Quality Assurance Plan Project Procedures	All previously created PM deliverables Project Risk Definition Project Risk Log Project Issue Definition Project Issue Log Project Change Request Definition Project Change Request Log		Project Closeout
	Systems Analysis	Design	Build	Test	Release
Software Development	Entry Deliverables Business Case Project Charter Detailed Business Requirements Exit Deliverables High Level Solution Design Reqmt's Traceability Log	Entry Deliverables High Level Solution Design Reqmt's Traceability Log Exit Deliverables Detailed Solution Design Programming Specifications Reqmt's Traceability Log	Entry Deliverables Detailed Solution Design Programming Specifications Reqmt's Traceability Log Exit Deliverables Unit Code Training & Support Plan Reqmt's Traceability Log	Entry Deliverables Unit Code (UT) Plan (UT) Evaluation Criteria Reqmt's Traceability Log Exit Deliverables Unit Code (UT) Evaluation Criteria (UT) Defect Log Reqmt's Traceability Log	Entry Deliverables Unit Code (UT) Defect Log Reqmt's Traceability Log Exit Deliverables Unit Code Reqmt's Traceability Log (UT) Authorization
Software Testing	Entry Deliverables Business Case Project Charter Detailed Business Reqmt's Exit Deliverables Testing Strategy (UAT) Plan (UAT) Evaluation Criteria	Entry Deliverables High Level Solution Design Testing Strategy Exit Deliverables (SIT) Plan (SIT) Evaluation Criteria	Entry Deliverables Detailed Solution Design Programming Specifications Reqmt's Traceability Log Exit Deliverables (UT) Plan (UT) Evaluation Criteria Reqmt's Traceability Log	Entry Deliverables Unit Code (UT) Authorization (SIT) Plan (SIT) Evaluation Criteria Exit Deliverables (SIT) Evaluation Criteria (SIT) Defect Log (SIT) Authorization Reqmt's Traceability Log	Entry Deliverables Unit Code (SIT) Authorization (UAT) Plan (UAT) Evaluation Criteria Exit Deliverables (UAT) Evaluation Criteria (UAT) Defect Log (UAT) Authorization Reqmt's Traceability Log

Gantt Chart

Views ▾ Resources ▾   ▾  ▾  ▾



QAlassist – Software Development (SDLC) Methodology

Business Case (see sample)



- ▶ **Software Development** (lifecycle/methodology)
- ▶ **Initiate** (phase name)
- ▶ **Business Case** deliverable is used to identify and document a business need. It is used to clarify the business need and the organizational benefits that can be derived – informational requirements may include
 - Business Needs
 - Benefits
 - Organizational Effects
 - Constraints
 - Estimated Costs

QAlassist Integrated Methodology



QAlassist Integrated Methodology

	Initiate	Plan	Execute & Control		Closeout
Project Management	Business Case Detailed Business Req'ts	Project Charter Project Plan Project Schedule/VBS Roles & Responsibilities Project Deliverables Config. Management Plan Quality Assurance Plan Project Procedures	All previously created PM deliverables Project Risk Definition Project Risk Log Project Issue Definition Project Issue Log Project Change Request Definition Project Change Request Log		Project Closeout Team Status Report Project Status Report Unit Test (UT) Authorization System Integration Test (SIT) Authorization User Acceptance Test (UAT) Authorization
	Systems Analysis	Design	Build	Test	Release
Software Development	Entry Deliverables Business Case Project Charter Detailed Business Requirements Exit Deliverables High Level Solution Design Reqmt's Traceability Log	Entry Deliverables High Level Solution Design Reqmt's Traceability Log Exit Deliverables Detailed Solution Design Programming Specifications Reqmt's Traceability Log	Entry Deliverables Detailed Solution Design Programming Specifications Reqmt's Traceability Log Exit Deliverables Unit Code Training & Support Plan Reqmt's Traceability Log	Entry Deliverables Unit Code (UT) Plan (UT) Evaluation Criteria Reqmt's Traceability Log Exit Deliverables Unit Code (UT) Evaluation Criteria (UT) Defect Log Reqmt's Traceability Log	Entry Deliverables Unit Code (UT) Defect Log Reqmt's Traceability Log Exit Deliverables Unit Code Reqmt's Traceability Log (UT) Authorization
Software Testing	Entry Deliverables Business Case Project Charter Detailed Business Reqmt's Exit Deliverables Testing Strategy (UAT) Plan (UAT) Evaluation Criteria	Entry Deliverables High Level Solution Design Testing Strategy Exit Deliverables (SIT) Plan (SIT) Evaluation Criteria	Entry Deliverables Detailed Solution Design Programming Specifications Reqmt's Traceability Log Exit Deliverables (UT) Plan (UT) Evaluation Criteria Reqmt's Traceability Log	Entry Deliverables Unit Code (UT) Authorization (SIT) Plan (SIT) Evaluation Criteria Exit Deliverables (SIT) Evaluation Criteria (SIT) Defect Log (SIT) Authorization Reqmt's Traceability Log	Entry Deliverables Unit Code (SIT) Authorization (UAT) Plan (UAT) Evaluation Criteria Exit Deliverables (UAT) Evaluation Criteria (UAT) Defect Log (UAT) Authorization Reqmt's Traceability Log

QAlassist Integrated Methodology



QAlassist Integrated Methodology

	Initiate	Plan	Execute & Control		Closeout
Project Management	Business Case Detailed Business Req'ts	Project Charter Project Plan Project Schedule/VBS Roles & Responsibilities Project Deliverables Config. Management Plan Quality Assurance Plan Project Procedures	All previously created PM deliverables Project Risk Definition Project Risk Log Project Issue Definition Project Issue Log Project Change Request Definition Project Change Request Log		Project Closeout Team Status Report Project Status Report Unit Test (UT) Authorization System Integration Test (SIT) Authorization User Acceptance Test (UAT) Authorization
Software Development	Systems Analysis	Design	Build	Test	Release
	Entry Deliverables Business Case Project Charter Detailed Business Requirements Exit Deliverables High Level Solution Design Reqmt's Traceability Log	Entry Deliverables High Level Solution Design Reqmt's Traceability Log Exit Deliverables Detailed Solution Design Programming Specifications Reqmt's Traceability Log	Entry Deliverables Detailed Solution Design Programming Specifications Reqmt's Traceability Log Exit Deliverables Unit Code Training & Support Plan Reqmt's Traceability Log	Entry Deliverables Unit Code (UT) Plan (UT) Evaluation Criteria Reqmt's Traceability Log Exit Deliverables Unit Code (UT) Evaluation Criteria (UT) Defect Log Reqmt's Traceability Log	Entry Deliverables Unit Code (UT) Defect Log Reqmt's Traceability Log Exit Deliverables Unit Code Reqmt's Traceability Log (UT) Authorization
	Entry Deliverables Business Case Project Charter Detailed Business Reqmt's Exit Deliverables Testing Strategy (UAT) Plan (UAT) Evaluation Criteria	Entry Deliverables High Level Solution Design Testing Strategy Exit Deliverables (SIT) Plan (SIT) Evaluation Criteria	Entry Deliverables Detailed Solution Design Programming Specifications Reqmt's Traceability Log Exit Deliverables (UT) Plan (UT) Evaluation Criteria Reqmt's Traceability Log	Entry Deliverables Unit Code (UT) Authorization (SIT) Plan (SIT) Evaluation Criteria Exit Deliverables (SIT) Evaluation Criteria (SIT) Defect Log (SIT) Authorization Reqmt's Traceability Log	Entry Deliverables Unit Code (SIT) Authorization (UAT) Plan (UAT) Evaluation Criteria Exit Deliverables (UAT) Evaluation Criteria (UAT) Defect Log (UAT) Authorization Reqmt's Traceability Log



- The Software Testing (ST) methodology/lifecycle focuses on identifying the business solution criteria, verifying the business solution meets the business requirement, and validation that the functionality addresses the business need. Phases include:

- System Analysis
- Design
- Build
- Test
- Release

QAlassist Integrated Methodology



QAlassist Integrated Methodology

	Initiate	Plan	Execute & Control		Closeout
Project Management	Business Case Detailed Business Req'ts	Project Charter Project Plan Project Schedule/WBS Roles & Responsibilities Project Deliverables Config. Management Plan Quality Assurance Plan Project Procedures	All previously created PM deliverables Project Risk Definition Project Risk Log Project Issue Definition Project Issue Log Project Change Request Definition Project Change Request Log		Team Status Report Project Status Report Unit Test (UT) Authorization System Integration Test (SIT) Authorization User Acceptance Test (UAT) Authorization Project Closeout
	Systems Analysis	Design	Build	Test	Release
Software Development	Entry Deliverables Business Case Project Charter Detailed Business Requirements Exit Deliverables High Level Solution Design Reqmt's Traceability Log	Entry Deliverables High Level Solution Design Reqmt's Tracability Log Exit Deliverables Detailed Solution Design Programming Specifications Reqmt's Traceability Log	Entry Deliverables Detailed Solution Design Programming Specifications Reqmt's Tracability Log Exit Deliverables Unit Code Training & Support Plan Reqmt's Traceability Log	Entry Deliverables Unit Code (UT) Plan (UT) Evaluation Criteria Reqmt's Traceability Log Exit Deliverables Unit Code (UT) Evaluation Criteria (UT) Defect Log Reqmt's Traceability Log	Entry Deliverables Unit Code (UT) Defect Log Reqmt's Traceability Log Exit Deliverables Unit Code Reqmt's Traceability Log (UT) Authorization
Software Testing	Entry Deliverables Business Case Project Charter Detailed Business Reqmt's Exit Deliverables Testing Strategy (SIT) Plan (UAT) Evaluation Criteria	Entry Deliverables High Level Solution Design Testing Strategy Exit Deliverables (SIT) Plan (SIT) Evaluation Criteria	Entry Deliverables Detailed Solution Design Programming Specifications Reqmt's Traceability Log Exit Deliverables (UT) Plan (UT) Evaluation Criteria Reqmt's Traceability Log	Entry Deliverables Unit Code (UT) Authorization (SIT) Plan (SIT) Evaluation Criteria Exit Deliverables (SIT) Evaluation Criteria (SIT) Defect Log (SIT) Authorization Reqmt's Traceability Log	Entry Deliverables Unit Code (SIT) Authorization (UAT) Plan (UAT) Evaluation Criteria Exit Deliverables (UAT) Evaluation Criteria (UAT) Defect Log (UAT) Authorization Reqmt's Traceability Log

QAlassist Integrated Methodology



QAlassist Integrated Methodology

	Initiate	Plan	Execute & Control		Closeout
Project Management	Business Case Detailed Business Req'ts	Project Charter Project Plan Project Schedule/VBS Roles & Responsibilities Project Deliverables Config. Management Plan Quality Assurance Plan Project Procedures	All previously created PM deliverables Project Risk Definition Project Risk Log Project Issue Definition Project Issue Log Project Change Request Definition Project Change Request Log		Team Status Report Project Status Report Unit Test (UT) Authorization System Integration Test (SIT) Authorization User Acceptance Test (UAT) Authorization
	Systems Analysis	Design	Build	Test	Release
Software Development	Entry Deliverables Business Case Project Charter Detailed Business Requirements Exit Deliverables High Level Solution Design Reqmt's Traceability Log	Entry Deliverables High Level Solution Design Reqmt's Traceability Log Exit Deliverables Detailed Solution Design Programming Specifications Reqmt's Traceability Log	Entry Deliverables Detailed Solution Design Programming Specifications Reqmt's Traceability Log Exit Deliverables Unit Code Training & Support Plan Reqmt's Traceability Log	Entry Deliverables Unit Code (UT) Plan (UT) Evaluation Criteria Reqmt's Traceability Log Exit Deliverables Unit Code (UT) Evaluation Criteria (UT) Defect Log Reqmt's Traceability Log	Entry Deliverables Unit Code (UT) Defect Log Reqmt's Traceability Log Exit Deliverables Unit Code Reqmt's Traceability Log (UT) Authorization
Software Testing	Entry Deliverables Business Case Project Charter Detailed Business Reqmt's Exit Deliverables Testing Strategy (SIT) Plan (UAT) Evaluation Criteria	Entry Deliverables High Level Solution Design Testing Strategy Exit Deliverables (SIT) Plan (SIT) Evaluation Criteria	Entry Deliverables Detailed Solution Design Programming Specifications Reqmt's Traceability Log Exit Deliverables (UT) Plan (UT) Evaluation Criteria Reqmt's Traceability Log	Entry Deliverables Unit Code (UT) Authorization (SIT) Plan (SIT) Evaluation Criteria Exit Deliverables (SIT) Evaluation Criteria (SIT) Defect Log (SIT) Authorization Reqmt's Traceability Log	Entry Deliverables Unit Code (SIT) Authorization (UAT) Plan (UAT) Evaluation Criteria Exit Deliverables (UAT) Evaluation Criteria (UAT) Defect Log (UAT) Authorization Reqmt's Traceability Log

QAlassist – Software Testing (STLC) Methodology

Testing Strategy (see sample)



- ▶ **Software Testing** (lifecycle/methodology)
- ▶ **Initiate** (phase name)
- ▶ **Testing Strategy** deliverable is used to establish and layout the testing objectives and audiences – it will define the high level testing tasks and activities that will be performed to deliver a solution into a production environment – informational requirements may include
 - Objectives
 - Audiences
 - Activities
 - Testing Deliverables
 - Acceptance Criteria



- Viable IT methodologies (noun and verb) are designed to help not hinder
- IT methodologies (noun) are applicable for a wide range of IT Methodologies (verb) and delivery approaches (waterfall, spiral, agile, RAD, prototyping, etc)
- No hard or specific rules (ie iterations, frequency of iterations, deliverables to be completed) of how an IT methodology (noun) can best be applied or leveraged by an organization or project team
- No silver bullet - if the perfect combination of IT Methodology (noun) and IT Methodology (verb) existed, every project team and organization would be using it



- ▶ Deliverables (and content) may be re-usable from one project to another
- ▶ Not every deliverable of every phase has to be completed for every project - any and every deliverable to be completed must add value (cost, schedule, quality) to the project
- ▶ Not every section or sub-section of every deliverable has to be completed for every project - information used to populate every deliverable must add value (cost, schedule, quality) to the project

A Context for IT Methodology

Concepts I – Agenda



- ▶ IT Methodology - general context
- ▶ IT Methodology - as a “noun” and a “verb”
- ▶ IT Methodology constructs and hierarchy - “noun” (lifecycles, phases, deliverables)
- ▶ IT Methodology - “verb” (waterfall, agile, spiral, RAD)
- ▶ **IT Methodology structure & deliverable examples - “noun” (project management, software development, software testing)**
- ▶ IT Methodology - organizational compatibility and benefits
- ▶ Recap

A Context for IT Methodology

Concepts I – Agenda



- ▶ IT Methodology - general context
- ▶ IT Methodology - as a “noun” and a “verb”
- ▶ IT Methodology constructs and hierarchy - “noun” (lifecycles, phases, deliverables)
- ▶ IT Methodology - “verb” (waterfall, agile, spiral, RAD)
- ▶ IT Methodology structure & deliverable examples - “noun” (project management, software development, software testing)
- ▶ **IT Methodology - organizational compatibility and benefits**
- ▶ Recap

Methodology Benefits – “Project” Context



- **On Time** – project teams are able to scale and leverage the phases and deliverables to effectively deliver projects and functionality
- **Within Budget** – familiarity and recurring usage provides project teams a tool they can reuse to consistently deliver applications within budget
- **Built In “Quality”** – structure ensures project teams are working on the right deliverables for the right reasons to deliver the right solutions

Methodology Benefits – “Process” Context



- **Common IT Process** – applying a methodology /lifecycle to IT development and maintenance activities contributes to a standard organizational approach (adhering to budget, schedule, quality, resource flexibility)
- **Quality Assurance & Governance** – applying a methodology/lifecycle provides the basis for organizational process management - verifying and evaluating how organizational staff are utilizing the process
- **Metric – Basis for Improvement** – applying an organizational methodology/lifecycle provides the basis for assessing its usage and how it can be approved upon

Organizational Compatibility Considerations



- Operational Structure - every organization is structured differently, methodologies/lifecycles (noun or verb) must be customized and optimized within that structure
- Strategic Objectives - every organization has different strategic objectives (ie time to market, cost of goods, quality) methodologies/lifecycles (noun and verb) can contribute to those objectives
- Tools - every organization utilizes and maintains its own IT infrastructure and tool suite, methodologies/lifecycles must align and be compatible with this infrastructure and tool suite

A Context for IT Methodology

Concepts I – Agenda



- ▶ IT Methodology - general context
- ▶ IT Methodology - as a “noun” and a “verb”
- ▶ IT Methodology constructs and hierarchy - “noun” (lifecycles, phases, deliverables)
- ▶ IT Methodology - “verb” (waterfall, agile, spiral, RAD)
- ▶ IT Methodology structure & deliverable examples - “noun” (project management, software development, software testing)
- ▶ **IT Methodology - organizational compatibility and benefits**
- ▶ Recap

A Context for IT Methodology

Concepts I – Agenda



- ▶ IT Methodology - general context
- ▶ IT Methodology - as a “noun” and a “verb”
- ▶ IT Methodology constructs and hierarchy - “noun” (lifecycles, phases, deliverables)
- ▶ IT Methodology - “verb” (waterfall, agile, spiral, RAD)
- ▶ IT Methodology structure & deliverable examples - “noun” (project management, software development, software testing)
- ▶ IT Methodology - organizational compatibility and benefits
- ▶ **Recap**

Acknowledgements



- ISO (xxx) <http://www.iso.org/iso/home.html>
- SEI/CMMI <http://www.sei.cmu.edu/cmmi/> <http://cmmiinstitute.com/>
- ITIL <http://www.itiil-officialsite.com/>
- COBIT <http://www.isaca.org/Knowledge-Center/COBIT/Pages/Overview.aspx>
- RUP <http://www-01.ibm.com/software/awdtools/rup/>
- PMI <http://www.pmi.org/>
- PRINCE2 <http://www.prince-officialsite.com/>
- QAIassist http://www.qaiassist.com/integrated_methodology.html

Body of Knowledge



- ▶ Methodology/Lifecycle/Deliverables – www.qaiassist.com
 - Project Management, Software Development, Software Testing
- ▶ Body of Knowledge (Library) – www.qaiassist.com
 - **Methodology Origin** – origins of methodology – identifies the differences between the path we take (noun) and how we proceed (verb) down that path
 - **Context & Overview** – provides a general overview of IT Methodology and how it can be applied within an organization
 - **Deliverable Descriptions** - provides general descriptions for all the deliverables of the QAIassist Integrated Methodology

Until Next Session...



- **Keep Posing your Questions** – call or send your questions in (Denise and/or Cameron)
- **Explore the QAlassist Body of Knowledge** – refer to the QAlassist Body of Knowledge (sample deliverables, whitepapers, blog articles) – ([www-qaiassist.com](http://www.qaiassist.com))
- **QAlassist Practitioner** - find out more about becoming QAlassist certified “Foundation”, “Practitioner”
- **Tell your friends** - tell your friends, coworkers and colleagues about the Project Insight/QAlassist webinars – invite them to join us at the next session
- **Continuing Follow Up** – send out a survey at the completion of every webinar, follow up with attendees to obtain their suggestions and recommendation



Moderator



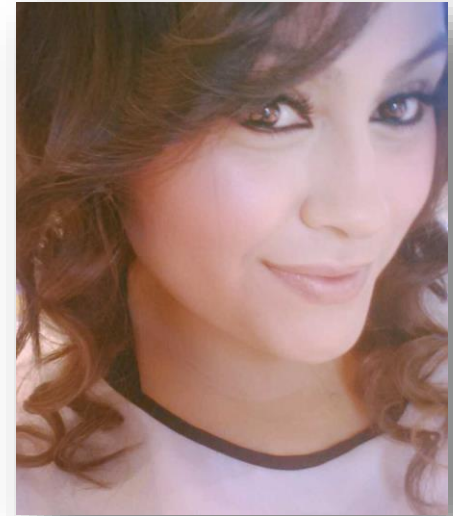
Denise Rodriguez

Project Insight

Marketing

Denise.Rodriguez@projectinsight.com

www.projectinsight.net



Learn more...



► Schedule a customized demo today

- +1 (949) 476-6499 x3
- info@projectinsight.net
- Request info: www.projectinsight.net

► Contact QAIassist

- +1 (613) 523-0052
- solutions@qaiassist.com
- Request info: www.qaiassist.com



Follow, like, subscribe!

Project Insight Community

- ▶ Sign up for more
- ▶ They are all FREE
- ▶ Check them out today!



IT
Methodology
and Agile

PM Training

Leadership

Product
Training

See you next time!